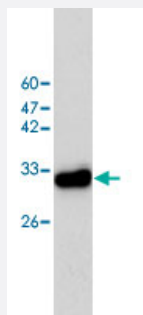


CAPZA1 monoclonal antibody, clone 2

Catalog # MAB9911

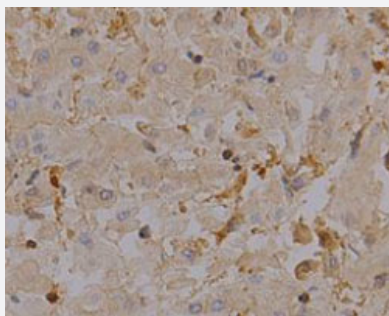
Size 100 ug

Applications



Western Blot (Cell lysate)

Western blot analysis of HeLa whole cell lysate with CAPZA1 monoclonal antibody, clone 2 (Cat # MAB9911) at 1:1000 dilution.



Immunohistochemistry

Immunohistochemical staining of human liver cancer tissue section with CAPZA1 monoclonal antibody, clone 2 (Cat # MAB9911) at 1:100 dilution.

Specification

| | |
|----------------------------|--|
| Product Description | Mouse monoclonal antibody raised against full length recombinant CAPZA1. |
| Immunogen | Recombinant protein corresponding to full length human CAPZA1. |
| Host | Mouse |
| Reactivity | Human |
| Specificity | It can expression in HeLa whole cell lysate. |
| Form | Liquid |
| Purification | Affinity purification |

| | |
|---------------------|--|
| Isotype | IgG1 |
| Recommend Usage | Western blot (1:1000) The optimal working dilution should be determined by the end user. |
| Storage Buffer | In Citrate-Tris-HCl buffer, pH 7.0 (0.02% Proclin 300) |
| Storage Instruction | Store at 4°C. For long term storage store at -20°C. Aliquot to avoid repeated freezing and thawing. |

Applications

- Western Blot (Cell lysate)

Western blot analysis of HeLa whole cell lysate with CAPZA1 monoclonal antibody, clone 2 (Cat # MAB9911) at 1:1000 dilution.

- Immunohistochemistry

Immunohistochemical staining of human liver cancer tissue section with CAPZA1 monoclonal antibody, clone 2 (Cat # MAB9911) at 1:100 dilution.

- Enzyme-linked Immunoabsorbent Assay

Gene Info — CAPZA1

| | |
|---------------------|--|
| Entrez GeneID | 829 |
| GeneBank Accession# | NM_006135.2 |
| Protein Accession# | NP_006126.1 |
| Gene Name | CAPZA1 |
| Gene Alias | CAPPA1, CAPZ, CAZ1 |
| Gene Description | capping protein (actin filament) muscle Z-line, alpha 1 |
| Omim ID | 601580 |
| Gene Ontology | Hyperlink |
| Gene Summary | CAPZA1 is a member of the F-actin capping protein alpha subunit family. This gene encodes the alpha subunit of the barbed-end actin binding protein. The protein regulates growth of the actin filament by capping the barbed end of growing actin filaments. [provided by RefSeq] |
| Other Designations | Cap Z[F-actin capping protein alpha-1 subunit]OTTHUMP00000013512 |