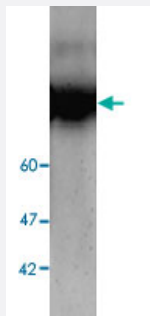


AFP monoclonal antibody, clone 39

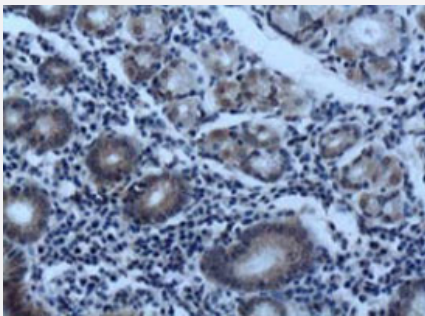
Catalog # MAB9896 Size 100 ug

Applications



Western Blot (Cell lysate)

Western blot analysis of HepG2 whole cell lysate with AFP monoclonal antibody, clone 39 (Cat # MAB9896) at 1:1000 dilution.



Immunohistochemistry

Immunohistochemical staining of human normal stomach tissue section with AFP monoclonal antibody, clone 39 (Cat # MAB9896) at 1:100 dilution.

Specification

Product Description	Mouse monoclonal antibody raised against full length recombinant AFP.
Immunogen	Recombinant protein corresponding to full length human AFP.
Host	Mouse
Reactivity	Human
Specificity	It can expression in HepG2 whole cell lysate.
Form	Liquid
Purification	Affinity purification

Isotype	IgG1
Recommend Usage	Western blot (1:1000) The optimal working dilution should be determined by the end user.
Storage Buffer	In Citrate-Tris-HCl buffer, pH 7.0 (0.02% Proclin 300)
Storage Instruction	Store at 4°C. For long term storage store at -20°C. Aliquot to avoid repeated freezing and thawing.

Applications

- Western Blot (Cell lysate)

Western blot analysis of HepG2 whole cell lysate with AFP monoclonal antibody, clone 39 (Cat # MAB9896) at 1:1000 dilution.

- Immunohistochemistry

Immunohistochemical staining of human normal stomach tissue section with AFP monoclonal antibody, clone 39 (Cat # MAB9896) at 1:100 dilution.

- Enzyme-linked Immunoabsorbent Assay

Gene Info — AFP

Entrez GeneID	174
GeneBank Accession#	NM_001134.1
Protein Accession#	NP_001125.1
Gene Name	AFP
Gene Alias	FETA, HPAFP
Gene Description	alpha-fetoprotein
Omim ID	104150
Gene Ontology	Hyperlink

Gene Summary

This gene encodes alpha-fetoprotein, a major plasma protein produced by the yolk sac and the liver during fetal life. Alpha-fetoprotein expression in adults is often associated with hepatoma or teratoma. However, hereditary persistence of alpha-fetoprotein may also be found in individuals with no obvious pathology. The protein is thought to be the fetal counterpart of serum albumin, and the alpha-fetoprotein and albumin genes are present in tandem in the same transcriptional orientation on chromosome 4. Alpha-fetoprotein is found in monomeric as well as dimeric and trimeric forms, and binds copper, nickel, fatty acids and bilirubin. The level of alpha-fetoprotein in amniotic fluid is used to measure renal loss of protein to screen for spina bifida and anencephaly. [provided by RefSeq]

Other Designations

OTTHUMP00000160480|alpha-1-fetoprotein|alpha-fetoglobulin

Disease

- [Carcinoma](#)
- [Liver Cirrhosis](#)
- [Liver Neoplasms](#)