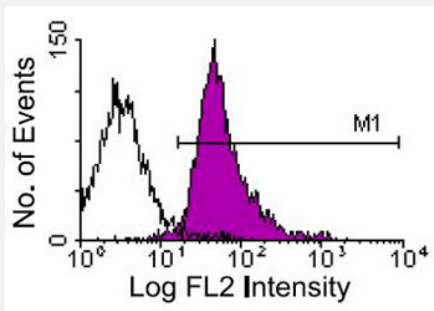


Itgb2 monoclonal antibody, clone C71/16 (Biotin)

Catalog # MAB9870 Size 500 ug

Applications



Flow Cytometry

BALB/c splenocytes were stained with Itgb2 monoclonal antibody, clone C71/16 (PE) (Cat # MAB9871). Small lymphocytes were then gated and analyzed on a FACScan™ flow cytometer (BDIS, San Jose, CA).

Specification

Product Description	Rat monoclonal antibody raised against native Itgb2.
Immunogen	Native Itgb2 from cell membrane of mouse T cell lymphoma BW5147.
Host	Rat
Reactivity	Mouse
Form	Liquid
Conjugation	Biotin
Isotype	IgG2a, kappa
Recommend Usage	Flow Cytometry ($\leq 1 \text{ ug}/10^6$ cells) The optimal working dilution should be determined by the end user.
Storage Buffer	In PBS (0.09% sodium azide)
Storage Instruction	Store at 4°C. Do not freeze.
Note	This product contains sodium azide: a POISONOUS AND HAZARDOUS SUBSTANCE which should be handled by trained staff only.

Applications

- Flow Cytometry

BALB/c splenocytes were stained with Itgb2 monoclonal antibody, clone C71/16 (PE) (Cat # MAB9871). Small lymphocytes were then gated and analyzed on a FACScan™ flow cytometer (BDIS, San Jose, CA).

Gene Info — Itgb2

Entrez GeneID	16414
Gene Name	Itgb2
Gene Alias	2E6, AI528527, Cd18, LAD, LCAMB, Lfa1, MF17
Gene Description	integrin beta 2
Gene Ontology	Hyperlink
Other Designations	Mac-1 beta OTTMUSP00000021575 lymphocyte function associated antigen 1 macrophage anti gen-1 beta