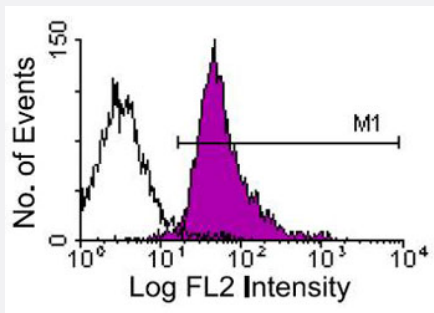


# Itgb2 monoclonal antibody, clone C71/16 (FITC)

Catalog # MAB9869      Size 500 ug

## Applications



### Flow Cytometry

BALB/c splenocytes were stained with Itgb2 monoclonal antibody, clone C71/16 (PE) (Cat # MAB9871). Small lymphocytes were then gated and analyzed on a FACScan™ flow cytometer (BDIS, San Jose, CA).

## Specification

<b>Product Description</b>	Rat monoclonal antibody raised against native Itgb2.
<b>Immunogen</b>	Native Itgb2 from cell membrane of mouse T cell lymphoma BW5147.
<b>Host</b>	Rat
<b>Reactivity</b>	Mouse
<b>Form</b>	Liquid
<b>Conjugation</b>	FITC
<b>Isotype</b>	IgG2a, kappa
<b>Recommend Usage</b>	Flow Cytometry ( $\leq 1 \text{ ug}/10^6 \text{ cells}$ ) The optimal working dilution should be determined by the end user.
<b>Storage Buffer</b>	In PBS (0.09% sodium azide)
<b>Storage Instruction</b>	Store at 4°C. Do not freeze.
<b>Note</b>	This product contains sodium azide: a POISONOUS AND HAZARDOUS SUBSTANCE which should be handled by trained staff only.

## Applications

- Flow Cytometry

BALB/c splenocytes were stained with Itgb2 monoclonal antibody, clone C71/16 (PE) (Cat # MAB9871). Small lymphocytes were then gated and analyzed on a FACScan™ flow cytometer (BDIS, San Jose, CA).

## Gene Info — Itgb2

Entrez GeneID	<a href="#">16414</a>
Gene Name	Itgb2
Gene Alias	2E6, AI528527, Cd18, LAD, LCAMB, Lfa1, MF17
Gene Description	integrin beta 2
Gene Ontology	<a href="#">Hyperlink</a>
Other Designations	Mac-1 beta OTTMUSP00000021575 lymphocyte function associated antigen 1 macrophage anti gen-1 beta