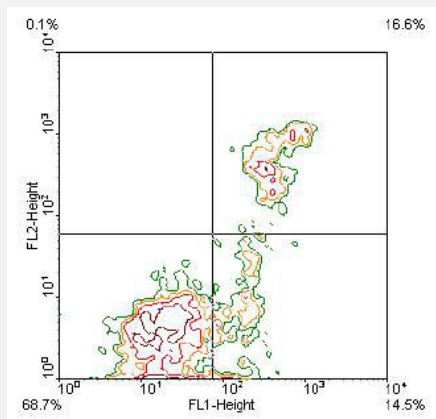


# Itgam monoclonal antibody, clone M1/70 (PE)

Catalog # MAB9863      Size 100 ug

## Applications



### Flow Cytometry

BALB/c splenocytes were double stained with Itgam monoclonal antibody, clone M1/70 (FITC)(Cat # MAB9861) and rat anti-mouse Ly-6G-PE. Lymphocytes were gated and analyzed by flow cytometry.

## Specification

<b>Product Description</b>	Rat monoclonal antibody raised against Itgam.
<b>Immunogen</b>	Native Itgam from mouse splenic T cells and splenocytes.
<b>Host</b>	Rat
<b>Reactivity</b>	Mouse
<b>Form</b>	Liquid
<b>Conjugation</b>	PE
<b>Isotype</b>	IgG2b, kappa
<b>Recommend Usage</b>	Flow Cytometry ( $\leq 0.3 \text{ ug}/10^6 \text{ cells}$ ) The optimal working dilution should be determined by the end user.
<b>Storage Buffer</b>	In PBS (0.09% sodium azide)
<b>Storage Instruction</b>	Store at 4°C. Do not freeze.

**Note**

This product contains sodium azide: a POISONOUS AND HAZARDOUS SUBSTANCE which should be handled by trained staff only.

## Applications

- Flow Cytometry

BALB/c splenocytes were double stained with Itgam monoclonal antibody, clone M1/70 (FITC)(Cat # MAB9861) and rat anti-mouse Ly-6G-PE. Lymphocytes were gated and analyzed by flow cytometry.

## Gene Info — Itgam

Entrez GeneID	<a href="#">16409</a>
Gene Name	Itgam
Gene Alias	CD11b/CD18, CR3, CR3A, Cd11b, F730045J24Rik, Ly-40, MAC1, Mac-1, Mac-1a
Gene Description	integrin alpha M
Gene Ontology	<a href="#">Hyperlink</a>
Other Designations	CD11B (p170) Mac-1 alpha cell surface glycoprotein MAC-1 alpha subunit complement component receptor 3 alpha complement component receptor 3 alpha-a complement receptor type 3 leukocyte adhesion receptor MO1 macrophage antigen alpha