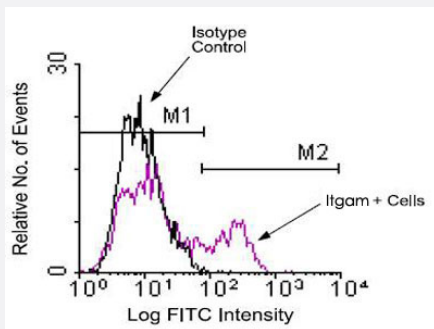


Itgam monoclonal antibody, clone 3A33 (Biotin)

Catalog # MAB9854 Size 500 ug

Applications



Flow Cytometry

BALB/c splenocytes were incubated with Itgam monoclonal antibody, clone 3A33 (Cat # MAB3223) and then stained with goat anti-rat IgG (H+L)-FITC. Large cells were gated and analyzed on a FACScan™ flow cytometer (BDIS, San Jose, CA).

Specification

Product Description	Rat monoclonal antibody raised against Itgam.
Immunogen	Native Itgam from mouse peritoneal macrophages.
Host	Rat
Reactivity	Mouse
Form	Liquid
Conjugation	Biotin
Isotype	IgG2a, kappa
Recommend Usage	Flow Cytometry ($\leq 1 \text{ ug}/10^6 \text{ cells}$) The optimal working dilution should be determined by the end user.
Storage Buffer	In PBS (0.09% sodium azide)
Storage Instruction	Store at 4°C. Do not freeze.
Note	This product contains sodium azide: a POISONOUS AND HAZARDOUS SUBSTANCE which should be handled by trained staff only.

Applications

- Flow Cytometry

BALB/c splenocytes were incubated with Itgam monoclonal antibody, clone 3A33 (Cat # MAB3223) and then stained with goat anti-rat IgG (H+L)-FITC. Large cells were gated and analyzed on a FACScan™ flow cytometer (BDIS, San Jose, CA).

Gene Info — Itgam

Entrez GeneID	16409
Gene Name	Itgam
Gene Alias	CD11b/CD18, CR3, CR3A, Cd11b, F730045J24Rik, Ly-40, MAC1, Mac-1, Mac-1a
Gene Description	integrin alpha M
Gene Ontology	Hyperlink
Other Designations	CD11B (p170) Mac-1 alpha cell surface glycoprotein MAC-1 alpha subunit complement component receptor 3 alpha complement component receptor 3 alpha-a complement receptor type 3 leukocyte adhesion receptor MO1 macrophage antigen alpha