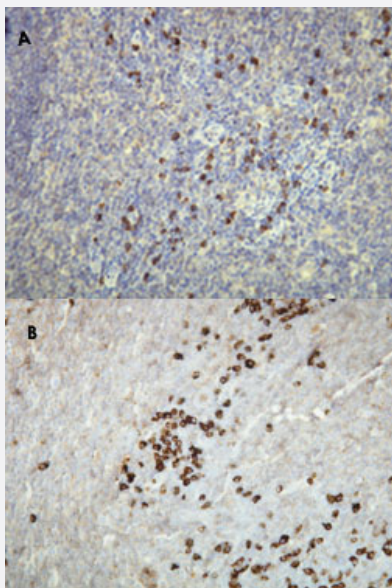


Human Kappa light chain monoclonal antibody, clone A21-Y

Catalog # MAB9775 Size 100 uL

Applications



Immunohistochemistry (Formalin/PFA-fixed paraffin-embedded sections)

Immunohistochemistry of human palatine tonsil tissue (Fig A&B).

Specification

Product Description	Rabbit monoclonal antibody raised against synthetic peptide of Human Kappa light chain.
Immunogen	A synthetic peptide corresponding to amino acids 47-63 at N-terminus of human Human Kappa light chain.
Host	Rabbit
Reactivity	Human
Form	Liquid
Recommend Usage	Immunohistochemistry (Formalin/PFA-fixed paraffin-embedded sections) (1:100-1:500) The optimal working dilution should be determined by the end user.
Storage Buffer	In 20 mM Tris-HCl, pH 8.0 (20 mg/mL BSA, 0.05% sodium azide)

Storage Instruction

Store at 4°C.

Note

This product contains sodium azide: a POISONOUS AND HAZARDOUS SUBSTANCE which should be handled by trained staff only.

Applications

- Immunohistochemistry (Formalin/PFA-fixed paraffin-embedded sections)
Immunohistochemistry of human palatine tonsil tissue (Fig A&B).
- Immunohistochemistry (Frozen sections)