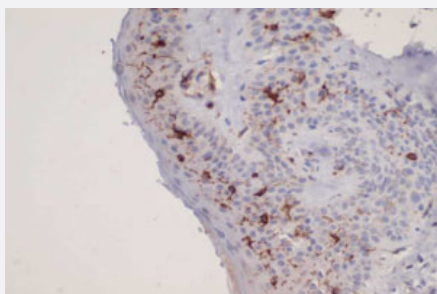


CD1A monoclonal antibody, clone L21-A

Catalog # MAB9761

Size 100 uL

Applications



Immunohistochemistry (Formalin/PFA-fixed paraffin-embedded sections)

Formalin-fixed and paraffin-embedded human skin cells (4 μ m) stained with CD1A monoclonal antibody, clone L21-A (Cat # MAB9761) show strong positive immunostaining of Langerhans cells in epidermis.

Kindly performed and provided by Katarina Poliaková, MD and L'ubomir Straka, MD, Ph. D. from Clinical Pathology Presov, Ltd., Presov, Slovakia

Specification

Product Description	Rabbit monoclonal antibody raised against synthetic peptide of CD1A.
Immunogen	A synthetic peptide corresponding to C-terminus of human CD1A.
Host	Rabbit
Reactivity	Human
Form	Liquid
Recommend Usage	Immunohistochemistry (Formalin/PFA-fixed paraffin-embedded sections) (1:100-1:200) The optimal working dilution should be determined by the end user.
Storage Buffer	In 20 mM Tris-HCl, pH 8.0 (20 mg/mL BSA, 0.05% sodium azide)
Storage Instruction	Store at 4°C.
Note	This product contains sodium azide: a POISONOUS AND HAZARDOUS SUBSTANCE which should be handled by trained staff only.

Applications

- Immunohistochemistry (Formalin/PFA-fixed paraffin-embedded sections)

Formalin-fixed and paraffin-embedded human skin cells (4 µm) stained with CD1A monoclonal antibody, clone L21-A (Cat # MAB9761) show strong positive immunostaining of Langerhans cells in epidermis.

Kindly performed and provided by Katarina Poliakova, MD and L'ubomir Straka, MD, Ph. D. from Clinical Pathology Presov, Ltd., Presov, Slovakia

- Immunohistochemistry (Frozen sections)

Gene Info — CD1A

Entrez GeneID [909](#)

Protein Accession# [P06126](#)

Gene Name CD1A

Gene Alias CD1, FCB6, HTA1, R4, T6

Gene Description CD1a molecule

Omim ID [188370](#)

Gene Ontology [Hyperlink](#)

Gene Summary This gene encodes a member of the CD1 family of transmembrane glycoproteins, which are structurally related to the major histocompatibility complex (MHC) proteins and form heterodimers with beta-2-microglobulin. The CD1 proteins mediate the presentation of primarily lipid and glycolipid antigens of self or microbial origin to T cells. The human genome contains five CD1 family genes organized in a cluster on chromosome 1. The CD1 family members are thought to differ in their cellular localization and specificity for particular lipid ligands. The protein encoded by this gene localizes to the plasma membrane and to recycling vesicles of the early endocytic system. Alternatively spliced transcript variants have been observed, but their biological validity has not been determined. [provided by RefSeq]

Other Designations CD1A antigen|CD1A antigen, a polypeptide|OTTHUMP00000018907|T-cell surface antigen T6/L eu-6|T-cell surface glycoprotein CD1a|cluster of differentiation 1 A|cortical thymocyte antigen CD1 A|differentiation antigen CD1-alpha-3|epidermal dendritic cell marker

Pathway

- [Hematopoietic cell lineage](#)

Disease

- [Campylobacter Infections](#)
- [Genetic Predisposition to Disease](#)
- [Guillain-Barre Syndrome](#)
- [Lung Diseases](#)
- [Mycobacterium Infections](#)
- [Polyradiculoneuropathy](#)