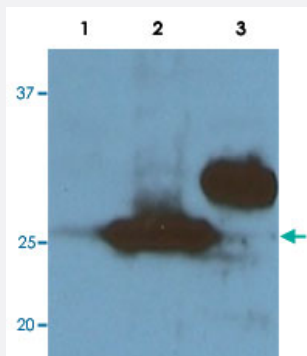


# RFP tag monoclonal antibody, clone RF5R

Catalog # MAB9754

Size 100 ug

## Applications



### Western Blot (Transfected lysate)

Western blot analysis probed against HEK293 cells transfected with RFP-tagged protein vector; untransfected control (1), transfected with Turbo-RFP (2), and transfected with DeRed (3). Blotting with RFP tag monoclonal antibody, clone RF5R (Cat # MAB9754) at 1:1000 dilution.

## Specification

|                            |   |
|----------------------------|---|
| <b>Product Description</b> | Mouse monoclonal antibody raised against synthetic peptide of RFP tag.  |
| <b>Immunogen</b>           | A synthetic peptide (conjugated with KLH) corresponding to N-terminus of sea anemon RFP tag.  |
| <b>Host</b>                | Mouse   |
| <b>Specificity</b>         | Recognizes native and denatured forms of RFP and its variants: TagRFP, TurboRFP, DsRed, mCherry, mOrange, tdTomato, etc.                  |
| <b>Form</b>                | Liquid  |
| <b>Purification</b>        | Protein A purification  |
| <b>Concentration</b>       | 1 mg/mL   |
| <b>Isotype</b>             | IgG1  |
| <b>Recommend Usage</b>     | Western Blot (1:1000-1:3000)<br>Immunohistochemistry (1:500-1:2000)<br>The optimal working dilution should be determined by the end user. |
| <b>Storage Buffer</b>      | In 10 mM PBS, pH 7.2 (0.05% sodium azide)   |

**Storage Instruction**

Store at -20°C.  
Aliquot to avoid repeated freezing and thawing.

**Note**

This product contains sodium azide: a POISONOUS AND HAZARDOUS SUBSTANCE which should be handled by trained staff only.

## Applications

- Western Blot (Transfected lysate)

Western blot analysis probed against HEK293 cells transfected with RFP-tagged protein vector; untransfected control (1), transfected with Turbo-RFP (2), and transfected with DeRed (3). Blotting with RFP tag monoclonal antibody, clone RF5R (Cat # MAB9754) at 1:1000 dilution.

- Immunohistochemistry

- Immunoprecipitation

- Enzyme-linked Immunoabsorbent Assay

- Dot Blot

## Publication Reference

- [The brain vascular damage-induced lymphatic ingrowth is directed by Cxcl12b/Cxcr4a.](#)

Jingying Chen, Jianbo He, Lingfei Luo.

Development 2022 Jul; 149(13):dev200729.

Application: ISH, Zebrafish, Zebrafish larvae

- [Tel2 regulates redifferentiation of bipotential progenitor cells via Hhex during zebrafish liver regeneration.](#)

Junren Zhang, Yang Zhou, Shuang Li, Dashuang Mo, Jianlong Ma, Rui Ni, Qifen Yang, Jianbo He, Lingfei Luo.

Cell Reports 2022 Apr; 39(1):110596.

Application: ISH, RFP protein