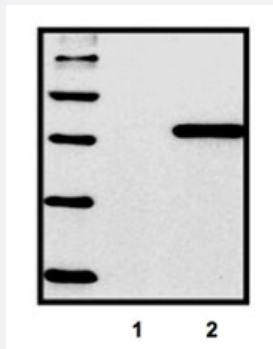


# His tag monoclonal antibody, clone HIS.H8

Catalog # MAB9752

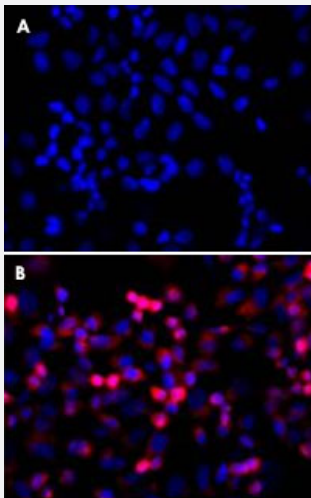
Size 100 ug

## Applications



### Western Blot (Transfected lysate)

Standard ladder containing five different His-tagged proteins; untransfected control (1), HEK293 cells transfected with His-tagged protein vector (2). Blotting with His tag monoclonal antibody, clone HIS.H8 (Cat # MAB9752).



### Immunofluorescence

Immunofluorescence staining of HEK293 cells.

A: untransfected control.

B: His tag monoclonal antibody, clone HIS.H8 (Cat # MAB9752) (in red) on His-tagged fusion proteins in HEK293 cells. Both counterstained with DAPI (in blue).

## Specification

**Product Description** Mouse monoclonal antibody raised against synthetic peptide of His tag.

**Immunogen** A synthetic peptide (conjugated with KLH) corresponding to His tag.

**Host** Mouse

<b>Specificity</b>	Recognizes the epitope of 6x His-tags encoded by many commercially available vectors, regardless of the tag's location in the fusion protein sequences (i.e.: reacts with N-terminal, C-terminal or internal 6x His-tags).
<b>Form</b>	Liquid
<b>Purification</b>	Protein A purification
<b>Concentration</b>	1 mg/mL
<b>Isotype</b>	IgG2b
<b>Recommend Usage</b>	Western Blot (1:1000-1:3000) Immunohistochemistry (1:500-1:2000) The optimal working dilution should be determined by the end user.
<b>Storage Buffer</b>	In 10 mM PBS, pH 7.2 (0.05% sodium azide)
<b>Storage Instruction</b>	Store at -20°C. Aliquot to avoid repeated freezing and thawing.
<b>Note</b>	This product contains sodium azide: a POISONOUS AND HAZARDOUS SUBSTANCE which should be handled by trained staff only.

## Applications

- Western Blot (Transfected lysate)

Standard ladder containing five different His-tagged proteins; untransfected control (1), HEK293 cells transfected with His-tagged protein vector (2). Blotting with His tag monoclonal antibody, clone HIS.H8 (Cat # MAB9752).

- Immunohistochemistry

- Immunofluorescence

Immunofluorescence staining of HEK293 cells.

A: untransfected control.

B: His tag monoclonal antibody, clone HIS.H8 (Cat # MAB9752) (in red) on His-tagged fusion proteins in HEK293 cells. Both counterstained with DAPI (in blue).

- Immunoprecipitation

- Enzyme-linked Immunoabsorbent Assay

- Dot Blot