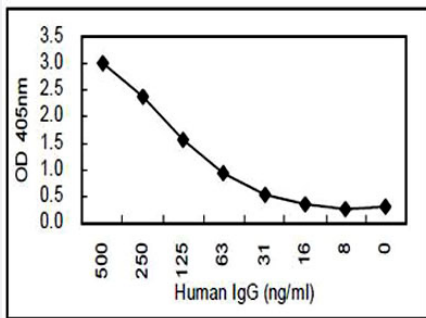


IgG monoclonal antibody, clone KT48

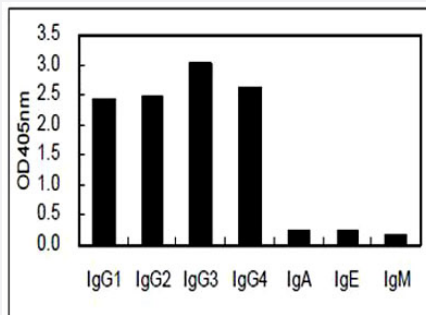
Catalog # MAB9725 Size 100 ug

Applications



Sandwich ELISA

Sandwich ELISA using IgG monoclonal antibody, clone KT48 (Cat # MAB9725) coated plate and HRP conjugated EGF monoclonal antibody, clone KT57 (Cat # MAB9725).



Specification

Product Description	Rat monoclonal antibody raised against recombinant human IgG Fc.
Immunogen	Recombinant fusion protein corresponding to human IgG Fc.
Host	Rat
Reactivity	Human
Specificity	This antibody is specific to human IgG. Not cross-react with human IgA, IgE and IgM.
Form	Liquid
Purification	Protein G purification

Concentration	1 mg/mL
Isotype	IgG2a
Quality Control Testing	Cross-reactivity test
Recommend Usage	ELISA (1 ug/mL) Sandwich ELISA (5 ug/mL for coating) The optimal working dilution should be determined by the end user.
Storage Buffer	In PBS (0.09% sodium azide)
Storage Instruction	Store at 4°C for short term storage. Aliquot and store at -20°C or -80°C for long term storage. Aliquot to avoid repeated freezing and thawing.
Note	This product contains sodium azide: a POISONOUS AND HAZARDOUS SUBSTANCE which should be handled by trained staff only.

Applications

- Enzyme-linked Immunoabsorbent Assay
- Sandwich ELISA

Sandwich ELISA using IgG monoclonal antibody, clone KT48 (Cat # MAB9725) coated plate and HRP conjugated EGF monoclonal antibody, clone KT57 (Cat # MAB9725).