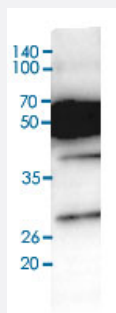


# TUBB2B monoclonal antibody, clone AT5B3

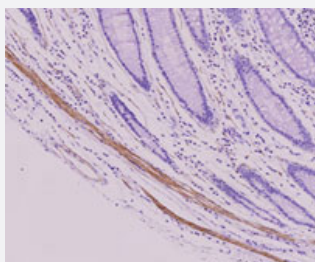
Catalog # MAB9717 Size 100 uL

## Applications



### Western Blot (Tissue lysate)

Western blot analysis of mouse brain tissue lysate.



### Immunohistochemistry (Formalin/PFA-fixed paraffin-embedded sections)

Immunohistochemistry paraffin embedded sections of human colorectal cancer tissue were incubated with TUBB2B monoclonal antibody, clone AT5B3 (Cat # MAB9717) (1 : 50) for 2 hours at room temperature. Antigen retrieval was performed in 0.1 M sodium citrate buffer and detected using Diaminobenzidine (DAB).

## Specification

<b>Product Description</b>	Mouse monoclonal antibody raised against partial recombinant TUBB2B.
<b>Immunogen</b>	Recombinant protein corresponding to amino acids 1-445 of human TUBB2b.
<b>Host</b>	Mouse
<b>Reactivity</b>	Human, Mouse
<b>Form</b>	Liquid
<b>Purification</b>	Protein G purification
<b>Concentration</b>	1 mg/mL

Isotype	IgG2a, kappa
Recommend Usage	ELISA Flow Cytometry Immunohistochemistry Immunocytochemistry Immunofluorescence Western Blot The optimal working dilution should be determined by the end user.
Storage Buffer	In PBS, pH 7.4 (10% glycerol, 0.02% sodium azide).
Storage Instruction	Store at 2°C to 8°C for 1 week. For long term storage, aliquot and store at -20°C to -80°C. Aliquot to avoid repeated freezing and thawing.
Note	This product contains sodium azide: a POISONOUS AND HAZARDOUS SUBSTANCE which should be handled by trained staff only.

## Applications

- Western Blot (Tissue lysate)

Western blot analysis of mouse brain tissue lysate.

- Immunohistochemistry (Formalin/PFA-fixed paraffin-embedded sections)

Immunohistochemistry paraffin embedded sections of human colorectal cancer tissue were incubated with TUBB2B monoclonal antibody, clone AT5B3 (Cat # MAB9717) (1 : 50) for 2 hours at room temperature. Antigen retrieval was performed in 0.1 M sodium citrate buffer and detected using Diaminobenzidine (DAB).

- Enzyme-linked Immunoabsorbent Assay

## Gene Info — TUBB2B

Entrez GeneID	<a href="#">347733</a>
Protein Accession#	<a href="#">NP_821080</a>
Gene Name	TUBB2B
Gene Alias	DKFZp566F223, FLJ98847, MGC8685, TUBB-PARALOG, bA506K6.1
Gene Description	tubulin, beta 2B
Gene Ontology	<a href="#">Hyperlink</a>
Gene Summary	O

**Other Designations**

OTTHUMP00000015964|class II beta-tubulin isotype|tubulin, beta polypeptide paralog

**Pathway**

- [Gap junction](#)
- [Pathogenic Escherichia coli infection - EHEC](#)