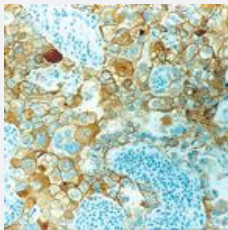


CDH1 monoclonal antibody, clone 36B5

Catalog # MAB9706

Size

Applications



Immunohistochemistry (Formalin/PFA-fixed paraffin-embedded sections)

Immunohistochemical staining for paraffin-embedded human plmonary adenocarcinoma section using CDH1 monoclonal antibody, clone 36B5 (Cat # MAB9706). Note intense cytoplasmic and membrane staining of tumor cells.

Specification

Product Description	Mouse monoclonal antibody raised against partial recombinant CDH1.
Immunogen	Recombinant protein corresponding to the N-terminal external region of CDH1.
Host	Mouse
Reactivity	Human
Form	Lyophilized
Isotype	IgG1
Recommend Usage	Immunohistochemistry (1:25-1:50) The optimal working dilution should be determined by the end user.
Storage Buffer	Lyophilized from tissue culture supernatant (0.09% sodium azide)
Storage Instruction	Store at 4°C on dry atmosphere. After reconstitution with steril distilled water, Store at 4°C for at least two months. For long term storage store at -20°C or below. Aliquot to avoid repeated freezing and thawing.

Note

This product contains sodium azide: a POISONOUS AND HAZARDOUS SUBSTANCE which should be handled by trained staff only.

Applications

- Immunohistochemistry (Formalin/PFA-fixed paraffin-embedded sections)

Immunohistochemical staining for paraffin-embedded human pulmonary adenocarcinoma section using CDH1 monoclonal antibody, clone 36B5 (Cat # MAB9706). Note intense cytoplasmic and membrane staining of tumor cells.