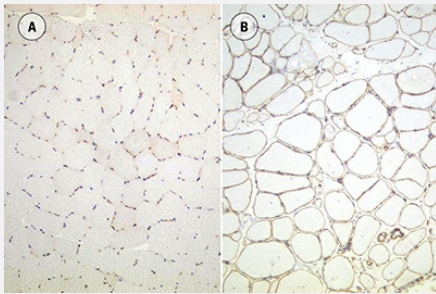


UTRN monoclonal antibody, clone DRP3/20C5

Catalog # MAB9698

Size 2.5 mL

Applications



Immunohistochemistry

Human skeletal muscle: immunohistochemical staining for Utrrophin. In control muscle the antibody labels blood vessels and neuromuscular junctions (A). Utrrophin is expressed at the sarcolemma in individuals with mutations in the DMD gene (B). Utrrophin: clone DRP3/20C5

Specification

Product Description	Mouse monoclonal antibody raised against partial recombinant UTRN.
Immunogen	Recombinant protein corresponding to the first 261 amino acids of DMDL gene sequence of UTRN.
Host	Mouse
Reactivity	Dog, Human, Rat
Specificity	Amino terminal domain of the human homolog of human dystrophin, utrophin (also known as dystrophin related protein or "DRP"). Also crossreacts with utrophin in sections of muscle from rat and dog. Other animals species have not been tested.
Form	Lyophilized
Isotype	IgG1
Recommend Usage	Immunohistochemistry The optimal working dilution should be determined by the end user.
Storage Buffer	Lyophilized from tissue culture supernatant (15 mM sodium azide).

Storage Instruction

Store unopened antibody at 4°C.

After reconstitution with sterile distilled water is stable for at least two months when stored at 4°C. For long term storage, it is recommended that aliquots of the reconstituted antibody are stored frozen at -20°C (frost-free freezers are not recommended).

Aliquot to avoid repeated freezing and thawing. Prepare working dilutions on the day of use. Return to 4°C immediately after use.

Note

This product contains sodium azide: a POISONOUS AND HAZARDOUS SUBSTANCE which should be handled by trained staff only.

Applications

- Immunohistochemistry

Human skeletal muscle: immunohistochemical staining for Utrophin. In control muscle the antibody labels blood vessels and neuromuscular junctions (A). Utrophin is expressed at the sarcolemma in individuals with mutations in the DMD gene (B).

Utrophin: clone DRP3/20C5