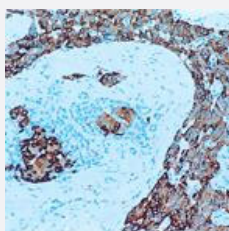


CHGA monoclonal antibody, clone 5H7

Catalog # MAB9679

Size

Applications



Immunohistochemistry (Formalin/PFA-fixed paraffin-embedded sections)

Immunohistochemical staining for paraffin-embedded human insulinoma section using CHGA monoclonal antibody, clone 5H7 (Cat # MAB9679). Note intense cytoplasmic staining of neoplastic islet cells.

Specification

Product Description Mouse monoclonal antibody raised against partial recombinant CHGA.

Immunogen Recombinant protein corresponding to part of the central region of CHGA.

Host Mouse

Reactivity Human

Form Lyophilized

Isotype IgG1

Recommend Usage Immunohistochemistry (1:200)
The optimal working dilution should be determined by the end user.

Storage Buffer Lyophilized from tissue culture supernatant (0.09% sodium azide)

Storage Instruction Store at 4°C on dry atmosphere.
After reconstitution with steril distilled water, Store at 4°C for at least two months.
For long term storage store at -20°C or below.
Aliquot to avoid repeated freezing and thawing.

Note

This product contains sodium azide: a POISONOUS AND HAZARDOUS SUBSTANCE which should be handled by trained staff only.

Applications

- Immunohistochemistry (Formalin/PFA-fixed paraffin-embedded sections)

Immunohistochemical staining for paraffin-embedded human insulinoma section using CHGA monoclonal antibody, clone 5H7 (Cat # MAB9679). Note intense cytoplasmic staining of neoplastic islet cells.