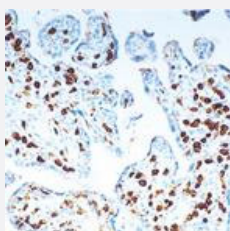


CD163 monoclonal antibody, clone 10D6

Catalog # MAB9632

Size

Applications



Immunohistochemistry (Formalin/PFA-fixed paraffin-embedded sections)

Immunohistochemical staining for paraffin-embedded human placenta section using CD163 monoclonal antibody, clone 10D6 (Cat # MAB9632). Note membrane and cytoplasmic staining of villous macrophages.

Specification

Product Description	Mouse monoclonal antibody raised against partial recombinant CD163.
Immunogen	Recombinant protein corresponding to domains 1 to 4 at N-terminus of CD163.
Host	Mouse
Reactivity	Human
Form	Lyophilized
Isotype	IgG1
Recommend Usage	Immunohistochemistry (1:50-1:100) The optimal working dilution should be determined by the end user.
Storage Buffer	Lyophilized from tissue culture supernatant (0.09% sodium azide)
Storage Instruction	Store at 4°C on dry atmosphere. After reconstitution with steril distilled water, Store at 4°C for at least two months. For long term storage store at -20°C or below. Aliquot to avoid repeated freezing and thawing.

Note

This product contains sodium azide: a POISONOUS AND HAZARDOUS SUBSTANCE which should be handled by trained staff only.

Applications

- Immunohistochemistry (Formalin/PFA-fixed paraffin-embedded sections)

Immunohistochemical staining for paraffin-embedded human placenta section using CD163 monoclonal antibody, clone 10D6 (Cat # MAB9632). Note membrane and cytoplasmic staining of villous macrophages.