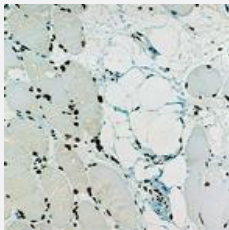


# EMD monoclonal antibody, clone 4G5

Catalog # MAB9584

Size

## Applications



### Immunohistochemistry (Formalin/PFA-fixed paraffin-embedded sections)

Immunohistochemical staining for paraffin-embedded human skeletal muscle section using EMD monoclonal antibody, clone 4G5 (Cat # MAB9584). Note perinuclear staining of all cell nuclear.

## Specification

<b>Product Description</b>	Mouse monoclonal antibody raised against partial recombinant EMD.
<b>Immunogen</b>	Recombinant protein corresponding to a 222 amino acid fragment near N-terminus of EMD.
<b>Host</b>	Mouse
<b>Reactivity</b>	Human
<b>Form</b>	Lyophilized
<b>Isotype</b>	IgG1
<b>Recommend Usage</b>	Immunohistochemistry (1:20-1:40) Western Blot (1:250-1:500) The optimal working dilution should be determined by the end user.
<b>Storage Buffer</b>	Lyophilized from tissue culture supernatant (0.09% sodium azide)
<b>Storage Instruction</b>	Store at 4°C on dry atmosphere. After reconstitution with steril distilled water, Store at 4°C for at least two months. For long term storage store at -20°C or below. Aliquot to avoid repeated freezing and thawing.

**Note**

This product contains sodium azide: a POISONOUS AND HAZARDOUS SUBSTANCE which should be handled by trained staff only.

---

## Applications

- Western Blot
- Immunohistochemistry (Formalin/PFA-fixed paraffin-embedded sections)

Immunohistochemical staining for paraffin-embedded human skeletal muscle section using EMD monoclonal antibody, clone 4G5 (Cat # MAB9584). Note perinuclear staining of all cell nuclear.

- Immunohistochemistry (Frozen sections)