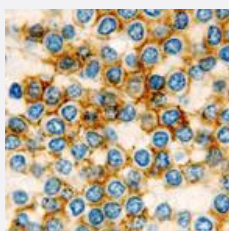


ITGAX monoclonal antibody, clone 5D11

Catalog # MAB9562

Size

Applications



Immunohistochemistry (Formalin/PFA-fixed paraffin-embedded sections)

Immunohistochemical staining for paraffin-embedded human hairy cell leukemia section using ITGAX monoclonal antibody, clone 5D11 (Cat # MAB9562). Note membrane staining of malignant cells.

Specification

Product Description	Mouse monoclonal antibody raised against partial recombinant ITGAX.
Immunogen	Recombinant protein corresponding to 258 amino acids near N-terminus of ITGAX .
Host	Mouse
Reactivity	Human
Form	Liquid
Isotype	IgG2a
Recommend Usage	Immunohistochemistry (1:80) The optimal working dilution should be determined by the end user.
Storage Buffer	In tissue culture supernatant (0.09% sodium azide)
Storage Instruction	Store at 4°C. For long term storage store at -20°C. Aliquot to avoid repeated freezing and thawing.
Note	This product contains sodium azide: a POISONOUS AND HAZARDOUS SUBSTANCE which should be handled by trained staff only.

Applications

- Immunohistochemistry (Formalin/PFA-fixed paraffin-embedded sections)

Immunohistochemical staining for paraffin-embedded human hairy cell leukemia section using ITGAX monoclonal antibody, clone 5D11 (Cat # MAB9562). Note membrane staining of malignant cells.

Gene Info — ITGAX

Entrez GeneID	3687
Gene Name	ITGAX
Gene Alias	CD11C, SLEB6
Gene Description	integrin, alpha X (complement component 3 receptor 4 subunit)
Omim ID	151510
Gene Ontology	Hyperlink
Gene Summary	This gene encodes the integrin alpha X chain protein. Integrins are heterodimeric integral membrane proteins composed of an alpha chain and a beta chain. This protein combines with the beta 2 chain (ITGB2) to form a leukocyte-specific integrin referred to as inactivated-C3b (iC3b) receptor 4 (CR4). The alpha X beta 2 complex seems to overlap the properties of the alpha M beta 2 integrin in the adherence of neutrophils and monocytes to stimulated endothelium cells, and in the phagocytosis of complement coated particles. [provided by RefSeq]
Other Designations	OTTHUMP00000163299 integrin alpha X integrin, alpha X (antigen CD11C (p150), alpha polypeptide) leu M5, alpha subunit leukocyte surface antigen p150,95, alpha subunit myeloid membrane antigen, alpha subunit p150 95 integrin alpha chain

Pathway

- [Regulation of actin cytoskeleton](#)

Disease

- [Genetic Predisposition to Disease](#)
- [Helicobacter Infections](#)
- [Lupus Erythematosus](#)

- [Stomach Ulcer](#)