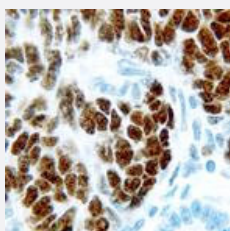


Wilms' Tumor monoclonal antibody, clone WT49

Catalog # MAB9552

Size

Applications



Immunohistochemistry (Formalin/PFA-fixed paraffin-embedded sections)

Immunohistochemical staining for paraffin-embedded human Wilm's tumor section using Wilms' Tumor monoclonal antibody, clone WT49 (Cat # MAB9552). Note intense nuclear staining of malignant cells.

Specification

Product Description	Mouse monoclonal antibody raised against partial recombinant Wilms' Tumor.
Immunogen	Recombinant protein corresponding to 1-181 amino acids at N-terminus of human Wilms' Tumor protein.
Host	Mouse
Reactivity	Human
Form	Liquid
Isotype	IgG1
Recommend Usage	Immunohistochemistry (1:40) The optimal working dilution should be determined by the end user.
Storage Buffer	In tissue culture supernatant (0.09% sodium azide)
Storage Instruction	Store at 4°C. Do not freeze.
Note	This product contains sodium azide: a POISONOUS AND HAZARDOUS SUBSTANCE which should be handled by trained staff only.

Applications

- Immunohistochemistry (Formalin/PFA-fixed paraffin-embedded sections)

Immunohistochemical staining for paraffin-embedded human Wilm's tumor section using Wilms' Tumor monoclonal antibody, clone WT49 (Cat # MAB9552). Note intense nuclear staining of malignant cells.

Publication Reference

- [Gastrointestinal Ewing Sarcoma: A Clinicopathological and Molecular Genetic Analysis of 25 Cases.](#)

Tangchen Yin, Mengyuan Shao, Meng Sun, Lu Zhao, I Weng Lao, Lin Yu, Jian Wang.

The American Journal of Surgical Pathology 2024 Mar; 48(3):275.

Application: IHC-P, Human, GI tract