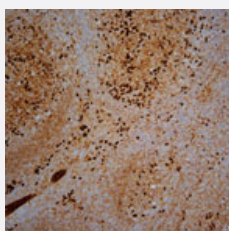


# Lambda Light Chain monoclonal antibody, clone SHL53.

Catalog # MAB9547

Size

## Applications



### Immunohistochemistry (Formalin/PFA-fixed paraffin-embedded sections)

Immunohistochemical staining for paraffin-embedded human tonsil section using Lambda Light Chain monoclonal antibody, clone SHL53. (Cat # MAB9547). Note intense cytoplasmic staining of plasma cells.

## Specification

<b>Product Description</b>	Mouse monoclonal antibody raised against partial recombinant Lambda Light Chain.
<b>Immunogen</b>	Recombinant protein corresponding to 105 amino acids of human Lambda Light Chain.
<b>Host</b>	Mouse
<b>Reactivity</b>	Human
<b>Form</b>	Liquid
<b>Isotype</b>	IgG1
<b>Recommend Usage</b>	Immunohistochemistry (1:200) The optimal working dilution should be determined by the end user.
<b>Storage Buffer</b>	In tissue culture supernatant (0.09% sodium azide)
<b>Storage Instruction</b>	Store at 4°C. Do not freeze.
<b>Note</b>	This product contains sodium azide: a POISONOUS AND HAZARDOUS SUBSTANCE which should be handled by trained staff only.

## Applications

- Immunohistochemistry (Formalin/PFA-fixed paraffin-embedded sections)

Immunohistochemical staining for paraffin-embedded human tonsil section using Lambda Light Chain monoclonal antibody, clone SHL53. (Cat # MAB9547). Note intense cytoplasmic staining of plasma cells.