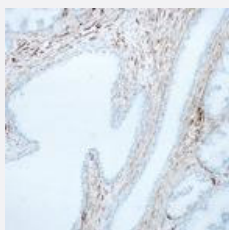


# Myosin heavy chain (developmental) monoclonal antibody, clone RNMy2/9D2

Catalog # MAB9514

Size

## Applications



### Immunohistochemistry (Formalin/PFA-fixed paraffin-embedded sections)

Immunohistochemical staining for paraffin-embedded human prostate using Myosin heavy chain (developmental) monoclonal antibody, clone RNMy2/9D2 (Cat # MAB9514). Note staining of smooth muscle fibers.

## Specification

**Product Description** Mouse monoclonal antibody raised against native myosin heavy chain (developmental).

**Immunogen** Native Myosin Heavy Chain (developmental) from rat hind limb muscle.

**Host** Mouse

**Reactivity** Human, Rat

**Form** Lyophilized

**Isotype** IgG1

**Recommend Usage** Immunohistochemistry (1:10-1:40)  
The optimal working dilution should be determined by the end user.

**Storage Buffer** Lyophilized from tissue culture supernatant (15 mM sodium azide)

**Storage Instruction** Store at 4°C on dry atmosphere.  
After reconstitution with steril distilled water, Store at 4°C for at least two months.  
For long term storage store at -20°C or below.  
Aliquot to avoid repeated freezing and thawing.

**Note**

This product contains sodium azide: a POISONOUS AND HAZARDOUS SUBSTANCE which should be handled by trained staff only.

## Applications

- Immunohistochemistry (Formalin/PFA-fixed paraffin-embedded sections)

Immunohistochemical staining for paraffin-embedded human prostate using Myosin heavy chain (developmental) monoclonal antibody, clone RNMy2/9D2 (Cat # MAB9514). Note staining of smooth muscle fibers.

- Immunohistochemistry (Frozen sections)