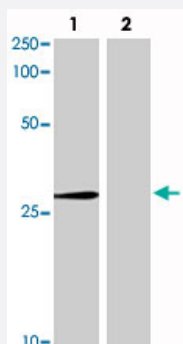


Abcc10 monoclonal antibody, clone C1.7F12.3G11

Catalog # MAB8968

Size 100 ug

Applications



Western Blot (Transfected lysate)

Western blot analysis in Lane 1: 293 cells transfected with Abcc10 and Lane 2: 293 cells transfected without Abcc10 with Abcc10 monoclonal antibody, clone C1.7F12.3G11 (Cat # MAB8968).

Specification

Product Description	Mouse monoclonal antibody raised against recombinant Abcc10.
Amount	100 uL
Immunogen	Recombinant protein corresponding to amino acids 890-894 of mouse Abcc10.
Host	Mouse
Reactivity	Mouse
Form	Liquid
Purification	Purified ascites
Concentration	1 ug/uL
Isotype	IgG1
Recommend Usage	The optimal working dilution should be determined by the end user.
Storage Buffer	In PBS, pH 7.4 (0.02% sodium azide)

Storage Instruction

Store at -20°C.
Aliquot to avoid repeated freezing and thawing.

Applications

- Western Blot (Transfected lysate)

Western blot analysis in Lane 1: 293 cells transfected with Abcc10 and Lane 2: 293 cells transfected without Abcc10 with Abcc10 monoclonal antibody, clone C1.7F12.3G11 (Cat # MAB8968).

Gene Info — Abcc10

Entrez GeneID	224814
Gene Name	Abcc10
Gene Alias	Mrp7, mFLJ00002
Gene Description	ATP-binding cassette, sub-family C (CFTR/MRP), member 10
Gene Ontology	Hyperlink
Gene Summary	sub-family C (CFTR/MRP)
Other Designations	ATP-binding cassette, sub-family C, member 10 multidrug resistance-associated protein 7

Publication Reference

- [Kyoto probe-1 reveals phenotypic differences between mouse ES cells and iTS-P cells.](#)

Chika Miyagi-Shiohira, Issei Saitoh, Masami Watanabe, Hirofumi Noguchi.

Scientific Reports 2020 Oct; 10(1):18084.

Application: IF, IHC, Mouse , miTS-P cells