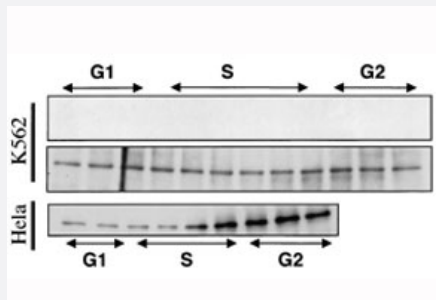


BUB1B monoclonal antibody, clone P10.8G1.G11.H12

Catalog # MAB8964

Size 100 ug

Applications



Western Blot (Cell lysate)

Western blot analysis in K562 and HeLa cells were separated according to their position in the cell cycle by centrifugal elutriation. BUB1B was immunoprecipitated from equal amounts of protein from each fraction, and then tested for autokinase activity (top) or probed with BUB1B antibodies to compare its cell cycle expression profile (middle and bottom). with BUB1B monoclonal antibody, clone P10.8G1.G11.H12 (Cat # MAB8964).

Specification

Product Description	Mouse monoclonal antibody raised against BUB1B.
Amount	100 uL
Immunogen	Recombinant protein corresponding to human BUB1B.
Host	Mouse
Reactivity	Human
Form	Liquid
Purification	Purified ascites
Concentration	1 ug/uL
Isotype	IgG1
Recommend Usage	The optimal working dilution should be determined by the end user.
Storage Buffer	In PBS, pH 7.4 (0.02% sodium azide)

Storage Instruction

Store at -20°C.
Aliquot to avoid repeated freezing and thawing.

Applications

- Western Blot (Cell lysate)

Western blot analysis in K562 and HeLa cells were separated according to their position in the cell cycle by centrifugal elutriation. BUB1B was immunoprecipitated from equal amounts of protein from each fraction, and then tested for autokinase activity (top) or probed with BUB1B antibodies to compare its cell cycle expression profile (middle and bottom). with BUB1B monoclonal antibody, clone P10.8G1.G11.H12 (Cat # MAB8964).

- Immunofluorescence

- Immunoprecipitation

Gene Info — BUB1B

Entrez GeneID [701](#)

Gene Name BUB1B

Gene Alias BUB1beta, BUBR1, Bub1A, MAD3L, SSK1, hBUBR1

Gene Description budding uninhibited by benzimidazoles 1 homolog beta (yeast)

Omim ID [114500 602860](#)

Gene Ontology [Hyperlink](#)

Gene Summary This gene encodes a kinase involved in spindle checkpoint function. The protein has been localized to the kinetochore and plays a role in the inhibition of the anaphase-promoting complex/cyclosome (APC/C), delaying the onset of anaphase and ensuring proper chromosome segregation. Impaired spindle checkpoint function has been found in many forms of cancer. [provided by RefSeq]

Other Designations BUB1 budding uninhibited by benzimidazoles 1 homolog beta|MAD3/BUB1-related protein kinase|budding uninhibited by benzimidazoles 1, beta

Pathway

- [Cell cycle](#)

Disease

- [Adenocarcinoma](#)
- [Breast cancer](#)
- [Breast Neoplasms](#)
- [Carcinoma](#)
- [Esophageal Neoplasms](#)
- [Genetic Predisposition to Disease](#)
- [Kidney Failure](#)
- [Lung Neoplasms](#)
- [Pulmonary Disease](#)