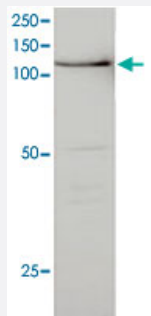


# BUB1 monoclonal antibody, clone P8.14H5.1H1

Catalog # MAB8963

Size 100 ug

## Applications



### Western Blot (Cell lysate)

Western blot analysis in HeLa nuclear with BUB1 monoclonal antibody, clone P8.14H5.1H1 (Cat # MAB8963).

## Specification

<b>Product Description</b>	Mouse monoclonal antibody raised against BUB1.
<b>Amount</b>	100 uL
<b>Immunogen</b>	Recombinant GST fusion protein corresponding to C-terminus (642 amino acids) of human BUB1.
<b>Host</b>	Mouse
<b>Reactivity</b>	Human
<b>Form</b>	Liquid
<b>Purification</b>	Purified ascites
<b>Concentration</b>	1 ug/uL
<b>Isotype</b>	IgG1
<b>Recommend Usage</b>	The optimal working dilution should be determined by the end user.
<b>Storage Buffer</b>	In PBS, pH 7.4 (0.02% sodium azide)

## Storage Instruction

Store at -20°C.  
Aliquot to avoid repeated freezing and thawing.

## Applications

- Western Blot (Cell lysate)

Western blot analysis in HeLa nuclear with BUB1 monoclonal antibody, clone P8.14H5.1H1 (Cat # MAB8963).

- Immunofluorescence

- Immunoprecipitation

## Gene Info — BUB1

Entrez GeneID [699](#)

Gene Name BUB1

Gene Alias BUB1A, BUB1L, hBUB1

Gene Description budding uninhibited by benzimidazoles 1 homolog (yeast)

Omim ID [602452](#)

Gene Ontology [Hyperlink](#)

**Gene Summary** This gene encodes a kinase involved in spindle checkpoint function. The kinase functions in part by phosphorylating a member of the mitotic checkpoint complex and activating the spindle checkpoint. Mutations in this gene have been associated with aneuploidy and several forms of cancer. [provided by RefSeq]

**Other Designations** BUB1 budding uninhibited by benzimidazoles 1 homolog|budding uninhibited by benzimidazoles 1|mitotic spindle checkpoint kinase|putative serine/threonine-protein kinase

## Pathway

- [Cell cycle](#)

## Disease

- [Alcoholism](#)
- [Breast cancer](#)
- [Breast Neoplasms](#)
- [Carcinoma](#)
- [Conduct Disorder](#)
- [Genetic Predisposition to Disease](#)
- [Ovarian Neoplasms](#)