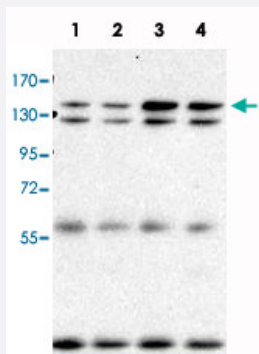


# Ahi1 monoclonal antibody, clone 645s3

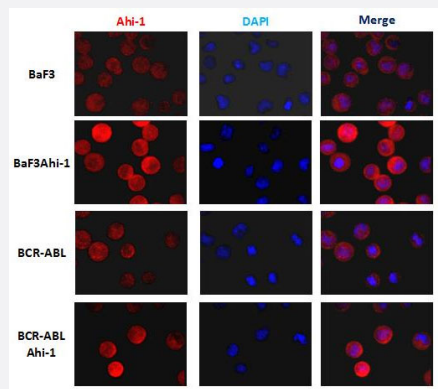
Catalog # MAB8962      Size 100 uL

## Applications



### Western Blot (Recombinant protein)

Immunoprecipitation and Western blot analysis in Lane 1: parental BaF3 cells, Lane 2: BaF3+BCR-ABL (BaF3 cells transduced with BCR-ABL), Lane 3: BaF3+BCR-ABL+mAhi-1 (M1, BaF3 cells transduced with both BCR-ABL and mouse Ahi-1, M1 is a clonal cell line), Lane 4: BaF3+BCR-ABL+mAhi-1 (C2, BaF3 cells transduced with both BCR-ABL and mouse Ahi-1, C2 is a clonal cell line) with Ahi1 monoclonal antibody, clone 645s3 (Cat # MAB8962).



### Immunofluorescence

Immunofluorescence analysis in Ba/F3 cells with Ahi1 monoclonal antibody, clone 645s3( Cat # MAB8962 ) at 1 : 200 dilution.

## Specification

Product Description	Mouse monoclonal antibody raised against partial recombinant Ahi1.
Amount	100 uL
Immunogen	Recombinant protein corresponding to C-terminus of mouse Ahi-1.
Host	Mouse
Reactivity	Mouse
Specificity	This antibody only specifically reacts with murine Ahi-1.

Form	Liquid
Purification	Affinity purification
Concentration	1 ug/uL
Isotype	IgG1
Recommend Usage	Western Blot (1:1000-1:2000) Immunoprecipitation (1-2 ug/200-800 ug protein) IHC (1:200-1:1000) The optimal working dilution should be determined.
Storage Buffer	In PBS, pH 7.4 (0.02% sodium azide)
Storage Instruction	Store at -20°C. Aliquot to avoid repeated freezing and thawing.

## Applications

- Western Blot (Recombinant protein)

Immunoprecipitation and Western blot analysis in Lane 1: parental BaF3 cells, Lane 2: BaF3+BCR-ABL (BaF3 cells transduced with BCR-ABL), Lane 3: BaF3+BCR-ABL+mAhi-1 (M1, BaF3 cells transduced with both BCR-ABL and mouse Ahi-1, M1 is a clonal cell line), Lane 4: BaF3+BCR-ABL+mAhi-1 (C2, BaF3 cells transduced with both BCR-ABL and mouse Ahi-1, C2 is a clonal cell line) with Ahi1 monoclonal antibody, clone 645s3 (Cat # MAB8962).

- Immunohistochemistry

- Immunofluorescence

Immunofluorescence analysis in Ba/F3 cells with Ahi1 monoclonal antibody, clone 645s3( Cat # MAB8962 ) at 1 : 200 dilution.

- Immunoprecipitation

## Gene Info — Ahi1

Entrez GeneID	<a href="#">52906</a>
Gene Name	Ahi1
Gene Alias	1700015F03Rik, Ahi-1, D10Bwg0629e
Gene Description	Abelson helper integration site 1
Gene Ontology	<a href="#">Hyperlink</a>

**Other Designations**jouberin

---