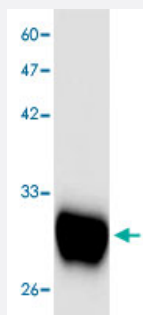


Escherichia coli SLT1 monoclonal antibody, clone 7e65s

Catalog # MAB8960

Size 100 uL

Applications



Western Blot (Recombinant protein)

Western blot analysis in SLT1 recombinant protein with *Escherichia coli* SLT1 monoclonal antibody, clone 7e65s (Cat # MAB8960) at 1 : 1000 dilution.

Specification

Product Description	Mouse monoclonal antibody raised against partial recombinant <i>Escherichia coli</i> SLT1.
Amount	100 uL
Immunogen	Recombinant protein corresponding to amino acids 17-244 of <i>Escherichia coli</i> SLT1.
Host	Mouse
Reactivity	<i>Escherichia coli</i>
Specificity	This antibody recognizes recombinant protein SLT1.
Form	Liquid
Purification	Affinity purification
Concentration	1 ug/uL
Isotype	IgG2a
Recommend Usage	Western Blot (1:1000) The optimal working dilution should be determined by the end user.

Storage Buffer	In citrate-Tris-HCl, pH7.0 (0.02% Proclin 300)
-----------------------	--

Storage Instruction	Store at -20°C. Aliquot to avoid repeated freezing and thawing.
----------------------------	--

Applications

- Western Blot (Recombinant protein)

Western blot analysis in SLT1 recombinant protein with *Escherichia coli* SLT1 monoclonal antibody, clone 7e65s (Cat # MAB8960) at 1 : 1000 dilution.

- Enzyme-linked Immunoabsorbent Assay