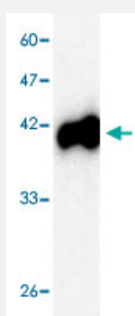


Japanese encephalitis virus PreM monoclonal antibody, clone 98r4s

Catalog # MAB8959 Size 100 uL

Applications



Western Blot (Recombinant protein)

Western blot analysis in PreM recombinant protein with *Japanese encephalitis virus* PreM monoclonal antibody, clone 98r4s (Cat # MAB8959) at 1 : 1000 dilution.

Specification

Product Description	Mouse monoclonal antibody raised against partial recombinant <i>Japanese encephalitis virus</i> PreM.
Amount	100 uL
Immunogen	Recombinant protein corresponding to amino acids 1-135 of <i>Japanese encephalitis virus</i> PreM.
Host	Mouse
Reactivity	Viruses
Specificity	This antibody recognizes recombinant protein JEV PreM.
Form	Liquid
Purification	Affinity purification
Concentration	1 ug/uL
Isotype	IgG1

Recommend Usage	Western Blot (1:1000) The optimal working dilution should be determined by the end user.
Storage Buffer	In citrate-Tris-HCl, pH7.0 (0.02% Proclin 300)
Storage Instruction	Store at -20°C. Aliquot to avoid repeated freezing and thawing.

Applications

- Western Blot (Recombinant protein)

Western blot analysis in PreM recombinant protein with *Japanese encephalitis virus* PreM monoclonal antibody, clone 98r4s (Cat # MAB8959) at 1 : 1000 dilution.

- Enzyme-linked Immunoabsorbent Assay