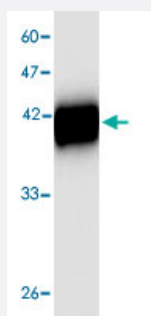


# Chro.40414 monoclonal antibody, clone 21s65

Catalog # MAB8938

Size 100 uL

## Applications



### Western Blot (Recombinant protein)

Western blot analysis in Chro.40414 recombinant protein with Chro.40414 monoclonal antibody, clone 21s65 (Cat # MAB8938) at 1 : 1000 dilution.

## Specification

**Product Description** Mouse monoclonal antibody raised against full length recombinant Chro.40414.

**Amount** 100 uL

**Immunogen** Recombinant protein corresponding to full length Chro.40414.

**Host** Mouse

**Specificity** This antibody recognizes recombinant protein Immunodominant antigen Cp23.

**Form** Liquid

**Purification** Affinity purification

**Concentration** 1 ug/uL

**Isotype** IgG2b

**Recommend Usage** Western Blot (1:1000)  
The optimal working dilution should be determined by the end user.

**Storage Buffer** In citrate-Tris-HCl, pH7.0 (0.02% Proclin 300)

**Storage Instruction**

Store at -20°C.  
Aliquot to avoid repeated freezing and thawing.

## Applications

- Western Blot (Recombinant protein)

Western blot analysis in Chro.40414 recombinant protein with Chro.40414 monoclonal antibody, clone 21s65 (Cat # MAB8938) at 1 : 1000 dilution.

- Enzyme-linked Immunoabsorbent Assay

## Gene Info — Chro.40414

Entrez GeneID	<a href="#">3414042</a>
Protein Accession#	<a href="#">XP_666427.1</a>
Gene Name	Chro.40414
Gene Alias	-
Gene Description	immunodominant antigen Cp23
Gene Ontology	<a href="#">Hyperlink</a>
Other Designations	-