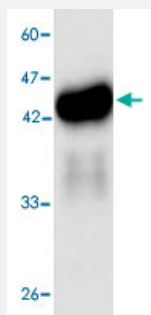


Listeria monocytogenes Hly monoclonal antibody, clone 68s45

Catalog # MAB8936

Size 100 uL

Applications



Western Blot (Recombinant protein)

Western blot analysis in LM Hly recombinant protein with *Listeria monocytogenes* Hly monoclonal antibody, clone 68s45 (Cat # MAB8936) at 1 : 1000 dilution.

Specification

Product Description	Mouse monoclonal antibody raised against partial recombinant <i>Listeria monocytogenes</i> Hly.
Amount	100 uL
Immunogen	Recombinant protein corresponding to amino acids 20-119 of <i>Listeria monocytogenes</i> Hly.
Host	Mouse
Specificity	This antibody recognizes recombinant protein LM Hly.
Form	Liquid
Purification	Affinity purification
Concentration	1 ug/uL
Isotype	IgG2b
Recommend Usage	Western Blot (1:1000) The optimal working dilution should be determined by the end user.
Storage Buffer	In citrate-Tris-HCl, pH7.0 (0.02% Proclin 300)

Storage Instruction

Store at -20°C.

Aliquot to avoid repeated freezing and thawing.

Applications

- Western Blot (Recombinant protein)

Western blot analysis in LM Hly recombinant protein with *Listeria monocytogenes* Hly monoclonal antibody, clone 68s45 (Cat # MAB8936) at 1 : 1000 dilution.

- Enzyme-linked Immunoabsorbent Assay