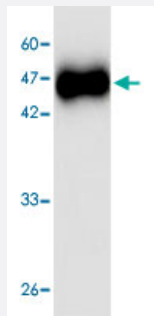


cgd7_4540 monoclonal antibody, clone 77f65

Catalog # MAB8915 Size 100 uL

Applications



Western Blot (Recombinant protein)

Western blot analysis in cgd7_4540 recombinant protein with cgd7_4540 monoclonal antibody, clone 77f65 (Cat # MAB8915) at 1 : 1000 dilution.

Specification

Product Description	Mouse monoclonal antibody raised against partial recombinant cgd7_4540.
Amount	100 uL
Immunogen	Recombinant protein corresponding to amino acids 9-156 of cgd7_4540.
Host	Mouse
Reactivity	Cryptosporidium parvum
Specificity	This antibody recognizes recombinant protein CP15.
Form	Liquid
Purification	Affinity purification
Concentration	1 ug/uL
Isotype	IgG1
Recommend Usage	Western Blot (1:1000) The optimal working dilution should be determined by the end user.

Storage Buffer	In citrate-Tris-HCl, pH7.0 (0.02% Proclin 300)
-----------------------	--

Storage Instruction	Store at -20°C. Aliquot to avoid repeated freezing and thawing.
----------------------------	--

Applications

- Western Blot (Recombinant protein)

Western blot analysis in cgd7_4540 recombinant protein with cgd7_4540 monoclonal antibody, clone 77f65 (Cat # MAB8915) at 1 : 1000 dilution.

- Enzyme-linked Immunoabsorbent Assay

Gene Info — cgd7_4540

Entrez GeneID	3371947
----------------------	-------------------------

Protein Accession#	XP_628604.1
---------------------------	-----------------------------

Gene Name	cgd7_4540
------------------	-----------

Gene Alias	-
-------------------	---

Gene Description	CP15/60 sporozoite 60K protein
-------------------------	--------------------------------

Gene Ontology	Hyperlink
----------------------	---------------------------

Other Designations	-
---------------------------	---