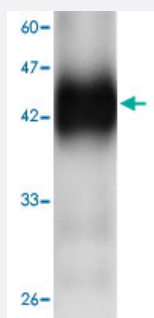


# cgd7\_4540 monoclonal antibody, clone 56g46

Catalog # MAB8914

Size 100 uL

## Applications



### Western Blot (Recombinant protein)

Western blot analysis in cgd7\_4540 recombinant protein with cgd7\_4540 monoclonal antibody, clone 56g46 (Cat # MAB8914) at 1 : 1000 dilution.

## Specification

<b>Product Description</b>	Mouse monoclonal antibody raised against partial recombinant cgd7_4540.
<b>Amount</b>	100 uL
<b>Immunogen</b>	Recombinant protein corresponding to amino acids 9-156 of cgd7_4540.
<b>Host</b>	Mouse
<b>Reactivity</b>	Cryptosporidium parvum
<b>Specificity</b>	This antibody recognizes recombinant protein CP15.
<b>Form</b>	Liquid
<b>Purification</b>	Affinity purification
<b>Concentration</b>	1 ug/uL
<b>Isotype</b>	IgG1
<b>Recommend Usage</b>	Western Blot (1:1000) The optimal working dilution should be determined by the end user.

<b>Storage Buffer</b>	In citrate-Tris-HCl, pH7.0 (0.02% Proclin 300)
-----------------------	--

<b>Storage Instruction</b>	Store at -20°C. Aliquot to avoid repeated freezing and thawing.
----------------------------	--

## Applications

- Western Blot (Recombinant protein)

Western blot analysis in cgd7\_4540 recombinant protein with cgd7\_4540 monoclonal antibody, clone 56g46 (Cat # MAB8914) at 1 : 1000 dilution.

- Enzyme-linked Immunoabsorbent Assay

## Gene Info — cgd7\_4540

<b>Entrez GeneID</b>	<a href="#">3371947</a>
----------------------	-------------------------

<b>Protein Accession#</b>	<a href="#">XP_628604.1</a>
---------------------------	-----------------------------

<b>Gene Name</b>	cgd7_4540
------------------	-----------

<b>Gene Alias</b>	-
-------------------	---

<b>Gene Description</b>	CP15/60 sporozoite 60K protein
-------------------------	--------------------------------

<b>Gene Ontology</b>	<a href="#">Hyperlink</a>
----------------------	---------------------------

<b>Other Designations</b>	-
---------------------------	---