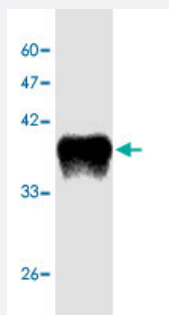


# Japanese encephalitis virus E-D3 monoclonal antibody, clone 17

Catalog # MAB8906

Size 100 uL

## Applications



### Western Blot (Recombinant protein)

Western blot analysis in E-D3 recombinant protein with *Japanese encephalitis virus* E-D3 monoclonal antibody, clone 17 (Cat # MAB8906) at 1 : 1000 dilution.

## Specification

|                     |   |
|---------------------|---|
| Product Description | Mouse monoclonal antibody raised against partial recombinant <i>Japanese encephalitis virus</i> E-D3. |
| Amount              | 100 uL  |
| Immunogen           | Recombinant protein corresponding to amino acids 291-402 of <i>Japanese encephalitis virus</i> E-D3.  |
| Host                | Mouse   |
| Reactivity          | Viruses   |
| Specificity         | This antibody recognizes recombinant protein Japanese encephalitis virus E-D3.                        |
| Form                | Liquid  |
| Purification        | Affinity purification   |
| Concentration       | 1 ug/uL   |
| Isotype             | IgG2a   |
| Recommend Usage     | Western Blot (1:1000)<br>The optimal working dilution should be determined by the end user.           |

|                       |  |
|-----------------------|--|
| <b>Storage Buffer</b> | In citrate-Tris-HCl, pH7.0 (0.02% Proclin 300) |
|-----------------------|--|

|                            |  |
|----------------------------|--|
| <b>Storage Instruction</b> | Store at -20°C.<br>Aliquot to avoid repeated freezing and thawing. |
|----------------------------|--|

## Applications

- Western Blot (Recombinant protein)

Western blot analysis in E-D3 recombinant protein with *Japanese encephalitis virus* E-D3 monoclonal antibody, clone 17 (Cat # MAB8906) at 1 : 1000 dilution.

- Enzyme-linked Immunoabsorbent Assay