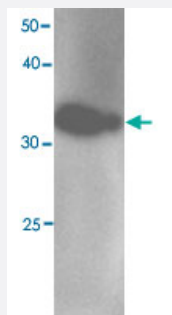


MYL12B monoclonal antibody, clone 401s3

Catalog # MAB8855 Size 100 uL

Applications



Western Blot (Recombinant protein)

Western blot analysis in MYL12B recombinant protein with MYL12B monoclonal antibody, clone 401s3 (Cat # MAB8855) at 1 : 1000 dilution.

Specification

Product Description	Mouse monoclonal antibody raised against full length recombinant MYL12B.
Amount	100 uL
Immunogen	Recombinant protein corresponding to full length human MYL12B.
Host	Mouse
Reactivity	Human
Specificity	This antibody recognizes recombinant protein MRLC2.
Form	Liquid
Purification	Affinity purification
Concentration	1 ug/uL
Isotype	IgG1
Recommend Usage	Western Blot (1:1000) The optimal working dilution should be determined by the end user.

Storage Buffer	In citrate-Tris-HCl, pH7.0 (0.02% Proclin 300)
----------------	--

Storage Instruction	Store at -20°C. Aliquot to avoid repeated freezing and thawing.
---------------------	--

Applications

- Western Blot (Recombinant protein)

Western blot analysis in MYL12B recombinant protein with MYL12B monoclonal antibody, clone 401s3 (Cat # MAB8855) at 1 : 1000 dilution.

- Enzyme-linked Immunoabsorbent Assay

Gene Info — MRCL2

Entrez GeneID	103910
---------------	------------------------

Protein Accession#	NM_033546.3
--------------------	-----------------------------

Gene Name	MRCL2
-----------	-------

Gene Alias	MLC-B
------------	-------

Gene Description	myosin regulatory light chain MRCL2
------------------	-------------------------------------

Omim ID	609211
---------	------------------------

Gene Ontology	Hyperlink
---------------	---------------------------

Gene Summary	The activity of nonmuscle myosin II (see MYH9; MIM 160775) is regulated by phosphorylation of a regulatory light chain, such as MRCL2. This phosphorylation results in higher MgATPase activity and the assembly of myosin II filaments (Iwasaki et al., 2001 [PubMed 11942626]).[supplied by OMIM]
--------------	---

Other Designations	OTTHUMP00000165806 OTTHUMP00000165807 OTTHUMP00000165808 myosin regulatory light chain MRCL2
--------------------	--

Pathway

- [Focal adhesion](#)

- [Leukocyte transendothelial migration](#)

- [Regulation of actin cytoskeleton](#)
- [Tight junction](#)