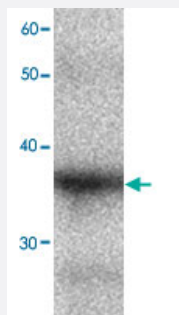


# SERPINB4 monoclonal antibody, clone 0v65

Catalog # MAB8848

Size 100 uL

## Applications



### Western Blot (Recombinant protein)

Western blot analysis in SERPINB4 recombinant protein with SERPINB4 monoclonal antibody, clone 0v65 (Cat # MAB8848) at 1 : 1000 dilution.

## Specification

**Product Description** Mouse monoclonal antibody raised against full length recombinant SERPINB4.

**Amount** 100 uL

**Immunogen** Recombinant protein corresponding to full length human SERPINB4.

**Host** Mouse

**Reactivity** Human

**Specificity** This antibody recognizes recombinant protein SCCA2.

**Form** Liquid

**Purification** Affinity purification

**Concentration** 1 ug/uL

**Isotype** IgG1

**Recommend Usage** Western Blot (1:1000)  
The optimal working dilution should be determined by the end user.

<b>Storage Buffer</b>	In citrate-Tris-HCl, pH7.0 (0.02% Proclin 300)
-----------------------	--

<b>Storage Instruction</b>	Store at -20°C. Aliquot to avoid repeated freezing and thawing.
----------------------------	--

## Applications

- Western Blot (Recombinant protein)

Western blot analysis in SERPINB4 recombinant protein with SERPINB4 monoclonal antibody, clone 0v65 (Cat # MAB8848) at 1 : 1000 dilution.

- Enzyme-linked Immunoabsorbent Assay

## Gene Info — SERPINB4

<b>Entrez GeneID</b>	<a href="#">6318</a>
----------------------	----------------------

<b>Protein Accession#</b>	<a href="#">NM_002974.2</a>
---------------------------	-----------------------------

<b>Gene Name</b>	SERPINB4
------------------	----------

<b>Gene Alias</b>	LEUPIN, PI11, SCCA-2, SCCA1, SCCA2
-------------------	------------------------------------

<b>Gene Description</b>	serpin peptidase inhibitor, clade B (ovalbumin), member 4
-------------------------	---

<b>Omim ID</b>	<a href="#">600518</a>
----------------	------------------------

<b>Gene Ontology</b>	<a href="#">Hyperlink</a>
----------------------	---------------------------

<b>Gene Summary</b>	clade B (ovalbumin)
---------------------	---------------------

<b>Other Designations</b>	SCCA2/SCCA1 fusion protein protease inhibitor (leucine-serpin) serine (or cysteine) proteinase inhibitor, clade B (ovalbumin), member 4 squamous cell carcinoma antigen 1 squamous cell carcinoma antigen 2
---------------------------	---