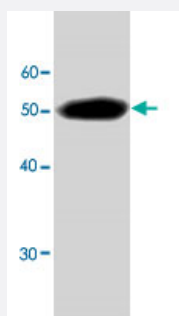


LDHA monoclonal antibody, clone 765d

Catalog # MAB8846

Size 100 uL

Applications



Western Blot (Recombinant protein)

Western blot analysis in LDHA recombinant protein with LDHA monoclonal antibody, clone 765d (Cat # MAB8846) at 1 : 1000 dilution.

Specification

Product Description	Mouse monoclonal antibody raised against full length recombinant LDHA.
Amount	100 uL
Immunogen	Recombinant protein corresponding to full length human LDHA.
Host	Mouse
Reactivity	Human
Specificity	This antibody recognizes recombinant protein LDHA.
Form	Liquid
Purification	Affinity purification
Concentration	1 ug/uL
Isotype	IgG1
Recommend Usage	Western Blot (1:1000) The optimal working dilution should be determined by the end user.

Storage Buffer	In citrate-Tris-HCl, pH7.0 (0.02% Proclin 300)
-----------------------	--

Storage Instruction	Store at -20°C. Aliquot to avoid repeated freezing and thawing.
----------------------------	--

Applications

- Western Blot (Recombinant protein)

Western blot analysis in LDHA recombinant protein with LDHA monoclonal antibody, clone 765d (Cat # MAB8846) at 1 : 1000 dilution.

- Enzyme-linked Immunoabsorbent Assay

Gene Info — LDHA

Entrez GeneID	3939
----------------------	----------------------

Protein Accession#	NM_005566.3
---------------------------	-----------------------------

Gene Name	LDHA
------------------	------

Gene Alias	LDH-M, LDH1, PIG19
-------------------	--------------------

Gene Description	lactate dehydrogenase A
-------------------------	-------------------------

Omim ID	150000
----------------	------------------------

Gene Ontology	Hyperlink
----------------------	---------------------------

Gene Summary	The protein encoded by this gene catalyzes the conversion of L-lactate and NAD to pyruvate and NADH in the final step of anaerobic glycolysis. The protein is found predominantly in muscle tissue and belongs to the lactate dehydrogenase family. Mutations in this gene have been linked to exertional myoglobinuria. Multiple transcript variants encoding different isoforms have been found for this gene. The human genome contains several non-transcribed pseudogenes of this gene. [provided by RefSeq]
---------------------	---

Other Designations	L-lactate dehydrogenase A proliferation-inducing gene 19
---------------------------	--

Pathway

- [Cysteine and methionine metabolism](#)

- [Glycolysis / Gluconeogenesis](#)

- [Metabolic pathways](#)
- [Propanoate metabolism](#)
- [Pyruvate metabolism](#)

Disease

- [Coronary Disease](#)
- [Genetic Predisposition to Disease](#)
- [Hypertension](#)
- [Narcolepsy](#)
- [Panic Disorder](#)