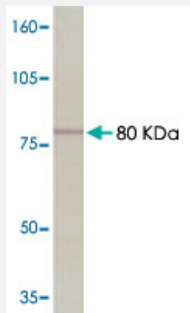


EZR monoclonal antibody, clone 45j8

Catalog # MAB8812 Size 100 uL

Applications



Western Blot (Cell lysate)

Western blot analysis of chicken fibroblast cell extract with EZR monoclonal antibody, clone 45j8 (Cat # MAB8812) at 1 : 2000 dilution.

Specification

Product Description	Mouse monoclonal antibody raised against partial recombinant EZR.
Immunogen	Recombinant protein corresponding to amino acids 362-585 at C-terminus of human EZR.
Host	Mouse
Reactivity	Bovine, Hamster, Human, Kangaroo, Monkey, Mouse
Form	Liquid
Purification	In ascites
Concentration	1 ug/uL
Isotype	IgG
Recommend Usage	Western Blot (1:1000) The optimal working dilution should be determined by the end user.
Storage Buffer	In PBS, pH 7.4 (0.02% sodium azide)
Storage Instruction	Store at -20°C. Aliquot to avoid repeated freezing and thawing.

Note

This product contains sodium azide: a POISONOUS AND HAZARDOUS SUBSTANCE which should be handled by trained staff only.

Applications

- Western Blot (Cell lysate)

Western blot analysis of chicken fibroblast cell extract with EZR monoclonal antibody, clone 45j8 (Cat # MAB8812) at 1 : 2000 dilution.

- Immunohistochemistry

- Immunocytochemistry

- Immunoprecipitation

Gene Info — EZR

Entrez GeneID	7430
---------------	----------------------

Gene Name	EZR
-----------	-----

Gene Alias	CVIL, CVL, DKFZp762H157, FLJ26216, MGC1584, VIL2
------------	--

Gene Description	ezrin
------------------	-------

Omim ID	123900
---------	------------------------

Gene Ontology	Hyperlink
---------------	---------------------------

Gene Summary	The cytoplasmic peripheral membrane protein encoded by this gene functions as a protein-tyrosine kinase substrate in microvilli. As a member of the ERM protein family, this protein serves as an intermediate between the plasma membrane and the actin cytoskeleton. This protein plays a key role in cell surface structure adhesion, migration and organization, and it has been implicated in various human cancers. A pseudogene located on chromosome 3 has been identified for this gene. Alternatively spliced variants have also been described for this gene. [provided by RefSeq]
--------------	---

Other Designations	OTTHUMP00000017506 OTTHUMP00000017507 cytovillin 2 villin 2 (ezrin)
--------------------	---

Pathway

- [Leukocyte transendothelial migration](#)

- [Pathogenic Escherichia coli infection - EHEC](#)
- [Regulation of actin cytoskeleton](#)

Disease

- [Asthma](#)
- [Cardiovascular Diseases](#)
- [Diabetes Mellitus](#)
- [Edema](#)
- [Genetic Predisposition to Disease](#)
- [Hypersensitivity](#)
- [Lung Neoplasms](#)
- [Ovarian Neoplasms](#)
- [Pulmonary Disease](#)
- [Tobacco Use Disorder](#)
- [Urinary Bladder Neoplasms](#)
- [Werner syndrome](#)