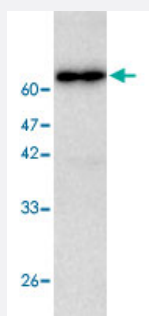


CTSC monoclonal antibody, clone 14

Catalog # MAB8780

Size 100 uL

Applications



Western Blot (Recombinant protein)

Western blot analysis in CTSC recombinant protein with CTSC monoclonal antibody, clone 14 (Cat # MAB8780) at 1 : 1000 dilution.

Specification

Product Description Mouse monoclonal antibody raised against full length recombinant CTSC.

Immunogen Recombinant protein corresponding to full length human CTSC.

Host Mouse

Reactivity Human

Specificity This antibody recognizes recombinant protein CTSC.

Form Liquid

Purification Affinity purification

Concentration 1 ug/uL

Isotype IgG2b

Recommend Usage Western Blot (1:1000)
The optimal working dilution should be determined by the end user.

Storage Buffer In citrate-Tris-HCl, pH 7.0 (0.02% Proclin 300)

Storage Instruction

Store at -20°C.

Aliquot to avoid repeated freezing and thawing.

Applications

- Western Blot (Recombinant protein)

Western blot analysis in CTSC recombinant protein with CTSC monoclonal antibody, clone 14 (Cat # MAB8780) at 1 : 1000 dilution.

- Enzyme-linked Immunoabsorbent Assay

Gene Info — CTSC

Entrez GeneID [1075](#)

Protein Accession# [NM_001814.4](#)

Gene Name CTSC

Gene Alias CPPI, DPP1, DPPI, HMS, JP, JPD, PALS, PLS

Gene Description cathepsin C

Omim ID [170650](#) [245000](#) [245010](#) [602365](#)

Gene Ontology [Hyperlink](#)

Gene Summary

The protein encoded by this gene, a member of the peptidase C1 family, is a lysosomal cysteine proteinase that appears to be a central coordinator for activation of many serine proteinases in immune/inflammatory cells. It is composed of a dimer of disulfide-linked heavy and light chains, both produced from a single protein precursor, and a residual portion of the propeptide acts as an intra molecular chaperone for the folding and stabilization of the mature enzyme. This enzyme requires chloride ions for activity and can degrade glucagon. Defects in the encoded protein have been shown to be a cause of Papillon-Lefevre syndrome, an autosomal recessive disorder characterized by palmoplantar keratosis and periodontitis. Multiple transcript variants encoding different isoforms have been found for this gene. [provided by RefSeq]

Other Designations cathepsin J|dipeptidyl transferase|dipeptidyl-peptidase I

Pathway

- [Lysosome](#)

Disease

- [Acute Disease](#)
- [Cardiovascular Diseases](#)
- [Chronic Disease](#)
- [Genetic Predisposition to Disease](#)
- [Inflammation](#)
- [Liver Diseases](#)
- [Periodontitis](#)