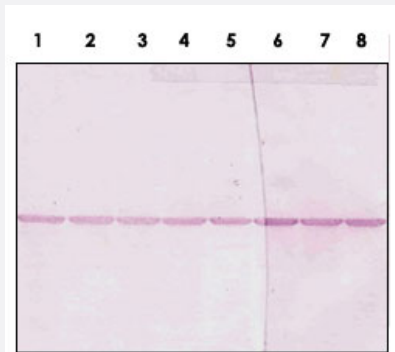


# Tubulin beta monoclonal antibody, clone H3

Catalog # MAB8770      Size 100 ug

## Applications



### Western Blot

Western blot analysis of 293 cells lysates with anti Tubulin alpha antibody (Lane 1-5) and Tubulin beta monoclonal antibody, clone H3 (Cat # MAB8770) (Lane 6-8).

## Specification

**Product Description** Mouse monoclonal antibody raised against recombinant Tubulin beta.

**Immunogen** Recombinant protein corresponding to human Tubulin beta.

**Host** Mouse

**Reactivity** Chlamydomonas, Frog, Fruit fly, Human, Kangaroo, Mouse

**Form** Liquid

**Purification** Protein A purification

**Concentration** 1 ug/uL

**Recommend Usage** Western Blot (1:1000)  
Immunofluorescence (1:100)  
The optimal working dilution should be determined by the end user.

**Storage Buffer** In PBS, pH 7.4 (0.05% sodium azide)

**Storage Instruction** Store at -20°C.  
Aliquot to avoid repeated freezing and thawing.

**Note**

This product contains sodium azide: a POISONOUS AND HAZARDOUS SUBSTANCE which should be handled by trained staff only.

---

## Applications

- Western Blot

Western blot analysis of 293 cells lysates with anti Tubulin alpha antibody (Lane 1-5) and Tubulin beta monoclonal antibody, clone H3 (Cat # MAB8770) (Lane 6-8).

- Immunofluorescence