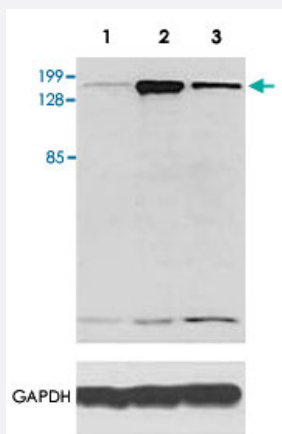


Als2 monoclonal antibody

Catalog # MAB8764 Size 100 ug

Applications



Western Blot (Transfected lysate)

Western blot analysis of Als2 monoclonal antibody (Cat # MAB8764) in mouse neuronal tissue : brain stem (Lane 1), cerebellum (Lane 2) and cortex (Lane 3) transfected with full length Als2-EGFP fusion construct (expected size 220 KDa).

Specification

Product Description	Mouse monoclonal antibody raised against partial recombinant Als2.
Immunogen	Recombinant protein corresponding to amino acids 221-321 of mouse Als2.
Sequence	PSQDLKPVPERCNQCSQLLITMTDKEDHVIISDSHCCPLGVTLTESQAENHASTALSPSTETLDRQ EEVFENTLVANDQSVATELNAVSAQITSSDAMSS
Host	Mouse
Reactivity	Mouse
Form	Liquid
Purification	Affinity purification
Isotype	IgG1, kappa
Recommend Usage	The optimal working dilution should be determined by the end user.
Storage Buffer	In PBS, pH 7.4 (0.02% sodium azide)

Storage Instruction

Store at -20°C.
Aliquot to avoid repeated freezing and thawing.

Note

This product contains sodium azide: a POISONOUS AND HAZARDOUS SUBSTANCE which should be handled by trained staff only.

Applications

- Western Blot (Transfected lysate)

Western blot analysis of Als2 monoclonal antibody (Cat # MAB8764) in mouse neuronal tissue : brain stem (Lane 1), cerebellum (Lane 2) and cortex (Lane 3) transfected with full length Als2-EGFP fusion construct (expected size 220 KDa).

Gene Info — ALS2

Entrez GeneID
[57679](#)
Gene Name

ALS2

Gene Alias

ALS2CR6, ALSJ, FLJ31851, IAHSP, KIAA1563, MGC87187, PLSJ

Gene Description

amyotrophic lateral sclerosis 2 (juvenile)

Omim ID
[205100](#) [606352](#) [606353](#) [607225](#)
Gene Ontology
[Hyperlink](#)
Gene Summary

The protein encoded by this gene contains an ATS1/RCC1-like domain, a RhoGEF domain, and a vacuolar protein sorting 9 (VPS9) domain, all of which are guanine-nucleotide exchange factors that activate members of the Ras superfamily of GTPases. The protein functions as a guanine nucleotide exchange factor for the small GTPase RAB5. The protein localizes with RAB5 on early endosomal compartments, and functions as a modulator for endosomal dynamics. Mutations in this gene result in several forms of juvenile lateral sclerosis and infantile-onset ascending spastic paralysis. Multiple transcript variants encoding different isoforms have been found for this gene. [provided by RefSeq]

Other Designations

alsin

Pathway

- [Amyotrophic lateral sclerosis \(ALS\)](#)

Disease

- [Amyotrophic lateral sclerosis](#)
- [Genetic Predisposition to Disease](#)
- [Multiple Sclerosis](#)
- [Tobacco Use Disorder](#)