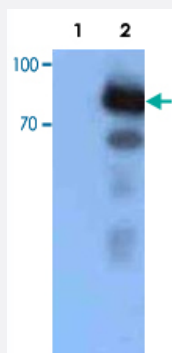


SV40 tag monoclonal antibody, clone PAb108

Catalog # MAB8761

Size 100 ug

Applications



Western Blot (Transfected lysate)

Western blot analysis of 293 cells.

Lane 1 : Negative Control.

Lane 2 : 293 cells infected by recombinant lentivirus expressing SV40.

Specification

Product Description	Mouse monoclonal antibody raised against native SV40 tag.
Immunogen	SV40 transformed mouse line B4; C-terminal.
Host	Mouse
Specificity	This antibody reacts with native and denatured large T antigen. It does not react with small T antigen of SV40 or large T antigen of BKV and human papovavirus.
Form	Liquid
Purification	Affinity purification
Concentration	1 ug/uL
Isotype	IgG2a1
Recommend Usage	The optimal working dilution should be determined by the end user.
Storage Buffer	In PBS, pH 7.4 (0.02% sodium azide).

Storage Instruction

Store at 4°C as an undiluted liquid for several weeks. Dilute only prior to immediate use. For extended storage, aliquot contents and freeze at -20°C or below.
Aliquot to avoid repeated freezing and thawing.

Note

This product contains sodium azide: a POISONOUS AND HAZARDOUS SUBSTANCE which should be handled by trained staff only.

Applications

- Western Blot (Transfected lysate)

Western blot analysis of 293 cells.

Lane 1 : Negative Control.

Lane 2 : 293 cells infected by recombinant lentivirus expressing SV40.

- Immunofluorescence

- Immunoprecipitation