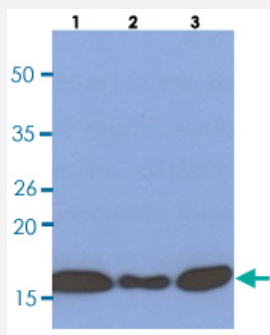


SUMO2 monoclonal antibody, clone AT10F1

Catalog # MAB8754

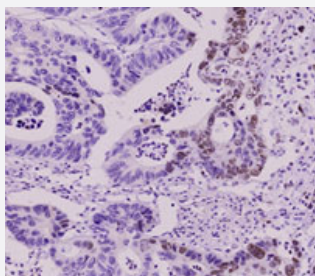
Size 100 uL

Applications



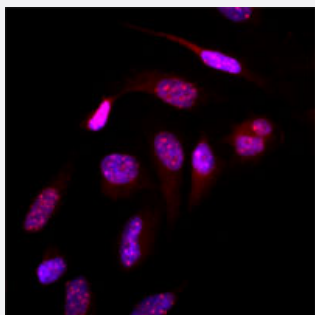
Western Blot (Cell lysate)

Western blot analysis of Lane 1: HeLa cell lysate, Lane 2: Jurkat cell lysate, Lane 3: K562 cell lysate.



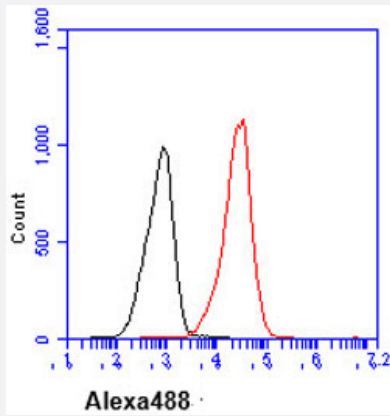
Immunohistochemistry (Formalin/PFA-fixed paraffin-embedded sections)

Immunohistochemistry paraffin embedded sections of human colorectal cancer tissue were incubated with SUMO2 monoclonal antibody, clone AT10F1 (Cat # MAB8754) (1 : 50) for 2 hours at room temperature. Antigen retrieval was performed in 0.1 M sodium citrate buffer and detected using Diaminobenzidine (DAB).



Immunofluorescence

Immunofluorescence of human HeLa cells stained with Hoechst 3342 (Blue) for nucleus staining and SUMO2 monoclonal antibody, clone AT10F1 (Cat # MAB8754) (1 : 500) with Texas Red (Red).



Flow Cytometry

Flow cytometry analysis of jurkat cell line, staining at 2-5 ug for 1x10⁶cells. (red line). The secondary antibody used goat anti-mouse IgG Alexa fluor 488 conjugate. Isotype control antibody was mouse IgG (black line).

Specification

Product Description	Mouse monoclonal antibody raised against partial recombinant SUMO2.
Immunogen	Recombinant protein corresponding to amino acids 1-93 of human SUMO2.
Host	Mouse
Reactivity	Human
Form	Liquid
Purification	Protein G purification
Concentration	1 mg/mL
Isotype	IgG2b, kappa
Recommend Usage	ELISA Flow Cytometry Immunohistochemistry Immunocytochemistry Immunofluorescence Western Blot The optimal working dilution should be determined by the end user.
Storage Buffer	In PBS, pH 7.4 (10% glycerol, 0.02% sodium azide).
Storage Instruction	Store at 2°C to 8°C for 1 week. For long term storage, aliquot and store at -20°C to -80°C. Aliquot to avoid repeated freezing and thawing.
Note	This product contains sodium azide: a POISONOUS AND HAZARDOUS SUBSTANCE which should be handled by trained staff only.

Applications

- Western Blot (Cell lysate)

Western blot analysis of Lane 1: HeLa cell lysate, Lane 2: Jurkat cell lysate, Lane 3: K562 cell lysate.

- Immunohistochemistry (Formalin/PFA-fixed paraffin-embedded sections)

Immunohistochemistry paraffin embedded sections of human colorectal cancer tissue were incubated with SUMO2 monoclonal antibody, clone AT10F1 (Cat # MAB8754) (1 : 50) for 2 hours at room temperature. Antigen retrieval was performed in 0.1 M sodium citrate buffer and detected using Diaminobenzidine (DAB).

- Immunocytochemistry

- Immunofluorescence

Immunofluorescence of human HeLa cells stained with Hoechst 3342 (Blue) for nucleus staining and SUMO2 monoclonal antibody, clone AT10F1 (Cat # MAB8754) (1 : 500) with Texas Red (Red).

- Enzyme-linked Immunoabsorbent Assay

- Flow Cytometry

Flow cytometry analysis of jurkat cell line, staining at 2-5 ug for 1×10^6 cells. (red line). The secondary antibody used goat anti-mouse IgG Alexa fluor 488 conjugate. Isotype control antibody was mouse IgG (black line).

Gene Info — SUMO2

Entrez GeneID	6613
---------------	----------------------

Protein Accession#	NP_008868
--------------------	---------------------------

Gene Name	SUMO2
-----------	-------

Gene Alias	HSMT3, MGC117191, SMT3B, SMT3H2
------------	---------------------------------

Gene Description	SMT3 suppressor of mif two 3 homolog 2 (S. cerevisiae)
------------------	--

Omim ID	603042
---------	------------------------

Gene Ontology	Hyperlink
---------------	---------------------------

Gene Summary

This gene encodes a protein that is a member of the SUMO (small ubiquitin-like modifier) protein family. It functions in a manner similar to ubiquitin in that it is bound to target proteins as part of a post-translational modification system. However, unlike ubiquitin which targets proteins for degradation, this protein is involved in a variety of cellular processes, such as nuclear transport, transcriptional regulation, apoptosis, and protein stability. It is not active until the last two amino acids of the carboxy-terminus have been cleaved off. Numerous pseudogenes have been reported for this gene. Alternate transcriptional splice variants, encoding different isoforms, have been characterized. [provided by RefSeq]

Other Designations

SMT3 suppressor of mif two 3 homolog 2|sentrin 2|small ubiquitin-like modifier 2, isoform a