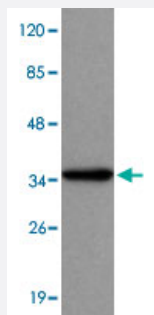


PPP4C monoclonal antibody

Catalog # MAB8749

Size 100 ug

Applications



Western Blot (Cell lysate)

Western blot analysis of PPP4C monoclonal antibody (Cat # MAB8749) at 1 : 1000 dilution. HeLa whole cell lysate 40 ug/Lane. Predicted band size : 34 KDa. Observed band size : 34 KDa.

Specification

Product Description Mouse monoclonal antibody raised against full length recombinant PPP4C.

Immunogen Recombinant protein corresponding to full length human PPP4C.

Host Mouse

Reactivity Human

Specificity This antibody is specific to PPP4C.

Form Liquid

Purification Protein G purification

Concentration 1 mg/mL

Recommend Usage Western Blot (1:100-1:2000)
ELISA (1:5000-1:20000)
The optimal working dilution should be determined by the end user.

Storage Buffer In PBS, pH 7.4 (0.02% sodium azide, 50% glycerol)

Storage Instruction

Store at 4°C for three months. For long term storage store at -20°C.
Aliquot to avoid repeated freezing and thawing.

Note

This product contains sodium azide: a POISONOUS AND HAZARDOUS SUBSTANCE which should be handled by trained staff only.

Applications

- Western Blot (Cell lysate)

Western blot analysis of PPP4C monoclonal antibody (Cat # MAB8749) at 1 : 1000 dilution. HeLa whole cell lysate 40 ug/Lane.
Predicted band size : 34 KDa. Observed band size : 34 KDa.

- Enzyme-linked Immunoabsorbent Assay

Gene Info — PPP4C

Entrez GeneID[5531](#)**GeneBank Accession#**[NM_002720](#)**Gene Name**

PPP4C

Gene Alias

PP4, PPH3, PPX

Gene Description

protein phosphatase 4 (formerly X), catalytic subunit

Omim ID[602035](#)**Gene Ontology**[Hyperlink](#)**Gene Summary**

O

Other Designations

Protein phosphatase 4, catalytic subunit

Disease

- [Autistic Disorder](#)
- [Genetic Predisposition to Disease](#)