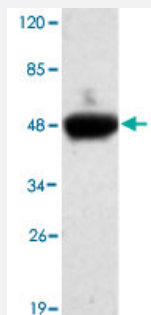


# CDH5 monoclonal antibody

Catalog # MAB8745

Size 100 ug

## Applications



### Western Blot (Recombinant protein)

Western blot analysis of CDH5 monoclonal antibody (Cat # MAB8745) at 1 : 2000 dilution interacts with recombinant CDH5 protein with a DsbA tag. Predicted band size : 51 KDa. Observed band size : 51 KDa.

## Specification

<b>Product Description</b>	Mouse monoclonal antibody raised against partial recombinant CDH5.
<b>Immunogen</b>	Recombinant protein corresponding to N-terminus residues of human CDH5.
<b>Host</b>	Mouse
<b>Reactivity</b>	Human
<b>Specificity</b>	This antibody is specific to CDH5.
<b>Form</b>	Liquid
<b>Purification</b>	Protein G purification
<b>Concentration</b>	1 mg/mL
<b>Recommend Usage</b>	Western Blot (1:100-1:2000) ELISA (1:5000-1:20000) The optimal working dilution should be determined by the end user.
<b>Storage Buffer</b>	In PBS, pH 7.4 (0.02% sodium azide, 50% glycerol)

**Storage Instruction**

Store at 4°C for three months. For long term storage store at -20°C.  
Aliquot to avoid repeated freezing and thawing.

**Note**

This product contains sodium azide: a POISONOUS AND HAZARDOUS SUBSTANCE which should be handled by trained staff only.

## Applications

- Western Blot (Recombinant protein)

Western blot analysis of CDH5 monoclonal antibody (Cat # MAB8745) at 1 : 2000 dilution interacts with recombinant CDH5 protein with a DsbA tag. Predicted band size : 51 KDa. Observed band size : 51 KDa.

- Enzyme-linked Immunoabsorbent Assay

## Gene Info — CDH5

**Entrez GeneID**[1003](#)**GeneBank Accession#**[NM\\_001795.3](#)**Gene Name**

CDH5

**Gene Alias**

7B4, CD144, FLJ17376

**Gene Description**

cadherin 5, type 2 (vascular endothelium)

**Omim ID**[601120](#)**Gene Ontology**[Hyperlink](#)**Gene Summary**

This gene is a classical cadherin from the cadherin superfamily and is located in a six-cadherin cluster in a region on the long arm of chromosome 16 that is involved in loss of heterozygosity events in breast and prostate cancer. The encoded protein is a calcium-dependent cell-cell adhesion glycoprotein comprised of five extracellular cadherin repeats, a transmembrane region and a highly conserved cytoplasmic tail. Functioning as a classic cadherin by imparting to cells the ability to adhere in a homophilic manner, the protein may play an important role in endothelial cell biology through control of the cohesion and organization of the intercellular junctions. An alternative splice variant has been described but its full length sequence has not been determined. [provided by RefSeq]

**Other Designations**

7B4 antigen|VE-cadherin|cadherin 5, type 2|cadherin 5, type 2, VE-cadherin (vascular epithelium)|cd144 antigen|endothelial-specific cadherin|vascular endothelial cadherin

## Pathway

- [Cell adhesion molecules \(CAMs\)](#)
- [Leukocyte transendothelial migration](#)

## Disease

- [Cardiovascular Diseases](#)
- [Diabetes Mellitus](#)
- [Edema](#)