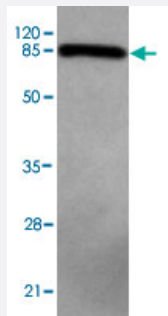


PRMT6 monoclonal antibody

Catalog # MAB8735

Size 100 ug

Applications



Western Blot (Cell lysate)

Western blot analysis of PRMT6 monoclonal antibody (Cat # MAB8735) at 1 : 500 dilution. 293T whole cell lysate 40 ug/Lane. Predicted band size : 42 KDa. Observed band size : 42 KDa.

Specification

Product Description Mouse monoclonal antibody raised against full length recombinant PRMT6.

Immunogen Recombinant protein corresponding to full length human PRMT6.

Host Mouse

Reactivity Human

Specificity This antibody is specific to PRMT6.

Form Liquid

Purification Protein G purification

Concentration 1 mg/mL

Recommend Usage Western Blot (1:100-1:2000)
ELISA (1:5000-1:20000)
The optimal working dilution should be determined by the end user.

Storage Buffer In PBS, pH 7.4 (0.02% sodium azide, 50% glycerol)

Storage Instruction

Store at 4°C for three months. For long term storage store at -20°C.
Aliquot to avoid repeated freezing and thawing.

Note

This product contains sodium azide: a POISONOUS AND HAZARDOUS SUBSTANCE which should be handled by trained staff only.

Applications

- Western Blot (Cell lysate)

Western blot analysis of PRMT6 monoclonal antibody (Cat # MAB8735) at 1 : 500 dilution. 293T whole cell lysate 40 ug/Lane.
Predicted band size : 42 KDa. Observed band size : 42 KDa.

- Enzyme-linked Immunoabsorbent Assay

Gene Info — PRMT6

Entrez GeneID [55170](#)

GeneBank Accession# [NM_018137.2](#)

Gene Name PRMT6

Gene Alias FLJ10559, HRMT1L6

Gene Description protein arginine methyltransferase 6

Omim ID [608274](#)

Gene Ontology [Hyperlink](#)

Gene Summary Protein arginine N-methyltransferases, such as PRMT6, catalyze the sequential transfer of a methyl group from S-adenosyl-L-methionine to the side chain nitrogens of arginine residues within proteins to form methylated arginine derivatives and S-adenosyl-L-homocysteine.[supplied by OMIM]

Other Designations HMT1 hnRNP methyltransferase-like 6|protein arginine N-methyltransferase 6

Disease

- [Acquired Immunodeficiency Syndrome](#)
- [Disease Progression](#)
- [Genetic Predisposition to Disease](#)

- [HIV Seropositivity](#)