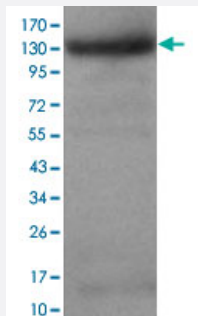


Klf4 monoclonal antibody

Catalog # MAB8725 Size 100 ug

Applications



Western Blot (Cell lysate)

Western blot analysis of Klf4 monoclonal antibody (Cat # MAB8725) at 1 : 500 dilution. HeLa whole cell lysate 40 ug/Lane, Predicted band size : 170 KDa, Observed band size : 130 KDa.

Specification

Product Description Mouse monoclonal antibody raised against full length recombinant Klf4.

Immunogen Recombinant protein corresponding to full length mouse Klf4.

Host Mouse

Reactivity Human, Mouse

Specificity This antibody is specific to Klf4.

Form Liquid

Purification Protein G purification

Concentration 1 mg/mL

Recommend Usage Western Blot (1:100-1:2000)
ELISA (1:5000-1:20000)
The optimal working dilution should be determined by the end user.

Storage Buffer In PBS, pH 7.4 (0.02% sodium azide, 50% glycerol)

Storage Instruction

Store at 4°C for three months. For long term storage store at -20°C.
Aliquot to avoid repeated freezing and thawing.

Note

This product contains sodium azide: a POISONOUS AND HAZARDOUS SUBSTANCE which should be handled by trained staff only.

Applications

- Western Blot (Cell lysate)

Western blot analysis of Klf4 monoclonal antibody (Cat # MAB8725) at 1 : 500 dilution. HeLa whole cell lysate 40 ug/Lane,
Predicted band size : 170 KDa, Observed band size : 130 KDa.

- Enzyme-linked Immunoabsorbent Assay

Gene Info — Klf4

Entrez GeneID[16600](#)**GeneBank Accession#**[NM_010637](#)**Gene Name**

Klf4

Gene Alias

EZF, Gklf, Zie

Gene Description

Kruppel-like factor 4 (gut)

Gene Ontology[Hyperlink](#)**Other Designations**

Kruppel-like factor 4 (Gut enriched kruppel-like factor) (Epithelial zinc-finger protein EZF)