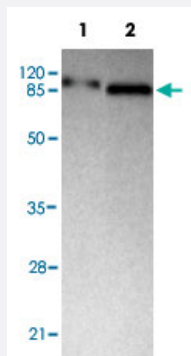


KDM1A monoclonal antibody

Catalog # MAB8721 Size 100 ug

Applications



Western Blot (Cell lysate)

Western blot analysis of KDM1A monoclonal antibody (Cat # MAB8721) at 1 : 500 dilution. Lane 1 : MCF-7 whole cell lysate 40 ug/Lane. Lane 2 : Jurkat whole cell lysate 35 ug/Lane.

Specification

Product Description	Mouse monoclonal antibody raised against partial recombinant KDM1A.
Immunogen	Recombinant protein corresponding to N-terminus residues of human KDM1A.
Host	Mouse
Reactivity	Human
Specificity	This antibody is specific to KDM1A.
Form	Liquid
Concentration	1 mg/mL
Recommend Usage	Western Blot (1:100-1:2000) ELISA (1:5000-1:20000) The optimal working dilution should be determined by the end user.
Storage Buffer	In PBS, pH 7.4 (0.02% sodium azide, 50% glycerol)
Storage Instruction	Store at 4°C for three months. For long term storage store at -20°C. Aliquot to avoid repeated freezing and thawing.

Note

This product contains sodium azide: a POISONOUS AND HAZARDOUS SUBSTANCE which should be handled by trained staff only.

Applications

- Western Blot (Cell lysate)

Western blot analysis of KDM1A monoclonal antibody (Cat # MAB8721) at 1 : 500 dilution. Lane 1 : MCF-7 whole cell lysate 40 ug/Lane. Lane 2 : Jurkat whole cell lysate 35 ug/Lane.

- Enzyme-linked Immunoabsorbent Assay

Gene Info — AOF2

Entrez GeneID	23028
---------------	-----------------------

GeneBank Accession#	NM_001009999
---------------------	------------------------------

Gene Name	AOF2
-----------	------

Gene Alias	BHC110, KDM1, KIAA0601, LSD1
------------	------------------------------

Gene Description	amine oxidase (flavin containing) domain 2
------------------	--

Omim ID	609132
---------	------------------------

Gene Ontology	Hyperlink
---------------	---------------------------

Gene Summary	This gene encodes a nuclear protein containing a SWIRM domain, a FAD-binding motif, and an amine oxidase domain. This protein is a component of several histone deacetylase complexes, through it silences genes by functioning as a histone demethylase. Alternative splicing results in multiple transcript variants. [provided by RefSeq]
--------------	--

Other Designations	BRAF35-HDAC complex protein BHC110 FAD-binding protein BRAF35-HDAC complex, 110 kDa subunit lysine (K)-specific demethylase 1 lysine-specific histone demethylase 1
--------------------	---