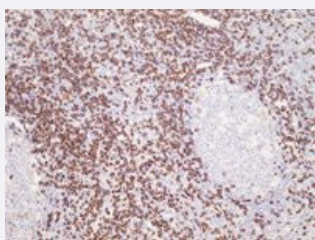


CD8A monoclonal antibody, clone P17-V

Catalog # MAB8436

Size 100 uL

Applications



Immunohistochemistry (Formalin/PFA-fixed paraffin-embedded sections)

Formalin-fixed and paraffin-embedded human tonsil tissue (4 um) stained with CD8A monoclonal antibody, clone P17-V (Cat # MAB8436) shows strong membranous immunostaining of T-lymphocytes. Kindly performed and provided by Katarina Poliakova, MD and Lubomir Straka, MD, Ph. D. from Clinical Pathology Presov, Ltd., Presov, Slovak republic.

Specification

Product Description	Rabbit monoclonal antibody raised against synthetic peptide of CD8A.
Immunogen	A synthetic peptide corresponding to C-terminus amino acids of human CD8A.
Host	Rabbit
Reactivity	Human
Form	Liquid
Recommend Usage	Immunohistochemistry (Formalin/PFA-fixed paraffin-embedded sections) (1:100-1:200) The optimal working dilution should be determined by the end user.
Storage Buffer	In 20 mM Tris-HCl, pH 8.0 (0.05% sodium azide)
Storage Instruction	Store at 4°C.
Note	This product contains sodium azide: a POISONOUS AND HAZARDOUS SUBSTANCE which should be handled by trained staff only.

Applications

- Immunohistochemistry (Formalin/PFA-fixed paraffin-embedded sections)

Formalin-fixed and paraffin-embedded human tonsil tissue (4 um) stained with CD8A monoclonal antibody, clone P17-V (Cat # MAB8436) shows strong membranous immunostaining of T-lymphocytes. Kindly performed and provided by Katarina Poliakova, MD and Lubomir Straka, MD, Ph. D. from Clinical Pathology Presov, Ltd., Presov, Slovak republic.

Gene Info — CD8A

Entrez GeneID [925](#)

Protein Accession# [P01732](#)

Gene Name CD8A

Gene Alias CD8, Leu2, MAL, p32

Gene Description CD8a molecule

Omim ID [186910 608957](#)

Gene Ontology [Hyperlink](#)

Gene Summary The CD8 antigen is a cell surface glycoprotein found on most cytotoxic T lymphocytes that mediates efficient cell-cell interactions within the immune system. The CD8 antigen acts as a coreceptor with the T-cell receptor on the T lymphocyte to recognize antigens displayed by an antigen presenting cell (APC) in the context of class I MHC molecules. The coreceptor functions as either a homodimer composed of two alpha chains, or as a heterodimer composed of one alpha and one beta chain. Both alpha and beta chains share significant homology to immunoglobulin variable light chains. This gene encodes the CD8 alpha chain isoforms. Multiple transcript variants encoding different isoforms have been found for this gene. [provided by RefSeq]

Other Designations CD8 antigen alpha polypeptide|CD8 antigen, alpha polypeptide (p32)|Leu2 T-lymphocyte antigen|OKT8 T-cell antigen|T cell co-receptor|T-cell antigen Leu2|T-cell surface glycoprotein CD8 alpha chain|T-lymphocyte differentiation antigen T8/Leu-2|T8 T-cell ant

Pathway

- [Antigen processing and presentation](#)
- [Cell adhesion molecules \(CAMs\)](#)
- [Hematopoietic cell lineage](#)

- [Primary immunodeficiency](#)
- [T cell receptor signaling pathway](#)