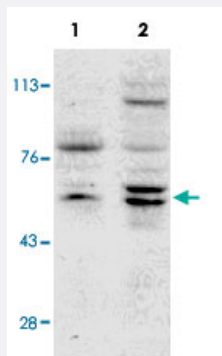


CASP6 monoclonal antibody, clone MCH2 14 1-190

Catalog # MAB8425

Size 100 ug

Applications



Western Blot (Cell lysate)

Western blot analysis using CASP6 monoclonal antibody, clone MCH2 14 1-190 (Cat # MAB8425) on MCF-7 cells negative (Lane 1) and positive (Lane 2) for CASP3 after treatment for 48 hours with thapsigargin.

Specification

Product Description	Mouse monoclonal antibody raised against CASP6.
Immunogen	A mixture of recombinant human CASP6 and mouse myeloma cells corresponding to CASP6.
Host	Mouse
Reactivity	Human
Form	Liquid
Isotype	IgG
Recommend Usage	The optimal working dilution should be determined by the end user.
Storage Buffer	In PBS (0.08% sodium azide)
Storage Instruction	Store at -20°C. Aliquot to avoid repeated freezing and thawing.
Note	This product contains sodium azide: a POISONOUS AND HAZARDOUS SUBSTANCE which should be handled by trained staff only.

Applications

- Western Blot (Cell lysate)

Western blot analysis using CASP6 monoclonal antibody, clone MCH2 14 1-190 (Cat # MAB8425) on MCF-7 cells negative (Lane 1) and positive (Lane 2) for CASP3 after treatment for 48 hours with thapsigargin.