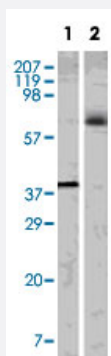


# ELK1 monoclonal antibody, clone 3H6D12, 4H9C8,4H9F1

Catalog # MAB8302

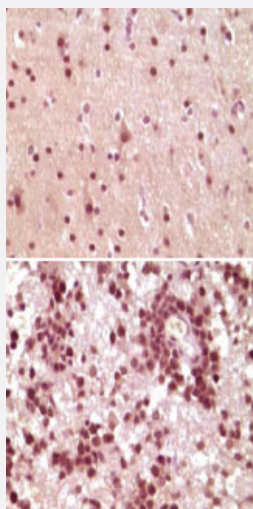
Size 100 uL

## Applications



### Western Blot

Western blot analysis using ELK1 monoclonal antibody, clone 3H6D12, 4H9C8,4H9F1 (Cat # MAB8302) against truncated recombinant ELK1 (Lane 1) and K-562 cell lysate (Lane 2).



### Immunohistochemistry (Formalin/PFA-fixed paraffin-embedded sections)

Immunoistochemical analysis of paraffin-embedded human brain tumor tissue showing nuclear/cytoplasmic localization using ELK1 with DAB staining.

## Specification

<b>Product Description</b>	Mouse monoclonal antibody raised against partial recombinant ELK1.
<b>Immunogen</b>	Recombinant protein corresponding to truncated human ELK1.
<b>Host</b>	Mouse
<b>Reactivity</b>	Human

Form	Liquid
Isotype	IgG1
Recommend Usage	Western Blot (1:500-1:1000) Immunohistochemistry (Formalin/PFA-fixed paraffin-embedded sections) (1:500-1:1000) ELISA (1:10000) The optimal working dilution should be determined by the end user.
Storage Buffer	In ascites
Storage Instruction	Store at -20°C. Aliquot to avoid repeated freezing and thawing.

## Applications

- Western Blot

Western blot analysis using ELK1 monoclonal antibody, clone 3H6D12, 4H9C8, 4H9F1 (Cat # MAB8302) against truncated recombinant ELK1 (Lane 1) and K-562 cell lysate (Lane 2).

- Immunohistochemistry (Formalin/PFA-fixed paraffin-embedded sections)

Immunohistochemical analysis of paraffin-embedded human brain tumor tissue showing nuclear/cytoplasmic localization using ELK1 with DAB staining.

- Enzyme-linked Immunoabsorbent Assay

## Gene Info — ELK1

Entrez GeneID	<a href="#">2002</a>
Gene Name	ELK1
Gene Alias	-
Gene Description	ELK1, member of ETS oncogene family
Omim ID	<a href="#">311040</a>
Gene Ontology	<a href="#">Hyperlink</a>

## Gene Summary

This gene is a member of the Ets family of transcription factors and of the ternary complex factor (TCF) subfamily. Proteins of the TCF subfamily form a ternary complex by binding to the the serum response factor and the serum reponse element in the promoter of the c-fos proto-oncogene. The protein encoded by this gene is a nuclear target for the ras-raf-MAPK signaling cascade. Alternately spliced transcript variants encoding the same protein have been found for this gene. [provided by RefSeq]

## Other Designations

ELK1 protein|OTTHUMP00000023224|OTTHUMP00000023225

## Publication Reference

- [PKCalpha expression regulated by Elk-1 and MZF-1 in human HCC cells.](#)

Hsieh YH, Wu TT, Tsai JH, Huang CY, Hsieh YS, Liu JY.

Biochemical and Biophysical Research Communications 2006 Jan; 339(1):217.

Application: ChIP, Human, HA22T/VGH cells

- [Activation of ternary complex factor Elk-1 by stress-activated protein kinases.](#)

Gille H, Strahl T, Shaw PE.

Current Biology 1995 Oct; 5(10):1191.

- [ERK phosphorylation potentiates Elk-1-mediated ternary complex formation and transactivation.](#)

Gille H, Kortenjann M, Thomae O, Moomaw C, Slaughter C, Cobb MH, Shaw PE.

The EMBO Journal 1995 Mar; 14(5):951.

Application: Func, WB-Re, Monkey, COS cells, Recombinant proteins

## Pathway

- [Endometrial cancer](#)
- [ErbB signaling pathway](#)
- [Focal adhesion](#)
- [GnRH signaling pathway](#)
- [Insulin signaling pathway](#)
- [MAPK signaling pathway](#)
- [Prion diseases](#)

## Disease

- [Cardiovascular Diseases](#)
- [Diabetes Mellitus](#)
- [Edema](#)