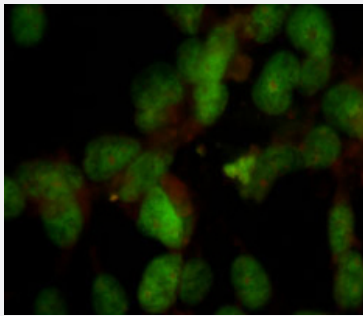


# Nuclei monoclonal antibody, clone 235-1

Catalog # MAB8178

Size 100 uL

## Applications



### Immunofluorescence

Immunostaining of HeLa cells showing specific labeling of Nuclei monoclonal antibody, clone 235-1 (Cat ID # MAB8178).

## Specification

<b>Product Description</b>	Mouse monoclonal antibody raised against native Nuclei.
<b>Immunogen</b>	Native purified from human cell homogenate.
<b>Host</b>	Mouse
<b>Reactivity</b>	Human
<b>Specificity</b>	This antibody reacts specifically with human cells, including neurons and embryonic stem cells, with no reactivity to rat or mouse cells. Specific for endogenous levels of human nuclei. Stains nuclei of all human cell types giving a diffuse nuclear staining pattern. Chromosomes are negatively stained in metaphase cells. With immunoprecipitation, the antibody reacts with a ~80 kDa and ~70 kDa band. The antibody works on acetone fixed and paraformaldehyde fixed cells. It is suggested that you permeabilize the cells with 0.1-0.4% Triton X100. The antibody also works for immunohistochemistry on paraformaldehyde fixed cryostat sections.
<b>Form</b>	Liquid
<b>Isotype</b>	IgG1
<b>Recommend Usage</b>	Immunofluorescence (1:100) Immunohistochemistry (1:100) The optimal working dilution should be determined by the end user.

**Storage Buffer**

In culture supernatant.

**Storage Instruction**

Store at -20°C. Recommended that the undiluted antibody be aliquoted into smaller working volumes (10-30 uL/vial depending on usage) upon arrival and stored long term at -20°C or -80°C, while keeping a working aliquot stored at 4°C for short term.  
Aliquot to avoid repeated freezing and thawing.

## Applications

- Immunofluorescence

Immunostaining of HeLa cells showing specific labeling of Nuclei monoclonal antibody, clone 235-1 (Cat ID # MAB8178).

## Publication Reference

- [Smooth muscle cells, but not myocytes, of host origin in transplanted human hearts.](#)

Glaser R, Lu MM, Narula N, Epstein JA.

Circulation 2002 Jul; 106(1):17.